



KINABALU
INTERNATIONAL
SCHOOL

NURTURING GLOBAL CITIZENS

IGCSE BROCHURE

2024-2026



CONTENTS

Section 1: Getting started

Welcome to Kinabalu International School	Page 3
Mission Statement, Guiding Statements	Page 4
Meet the Secondary Leadership Team	Page 5
The IGCSE programme	Page 6
How to Choose Your IGCSE Option	Page 9

Section 2: Core subjects

English Language	Page 12
English Literature	Page 14
Mathematics	Page 16
Modern Foreign Languages	Page 18

Section 3: Optional subjects

Art and Design	Page 24
Additional Mathematics	Page 26
Biology	Page 28
Business Studies	Page 31
Chemistry	Page 33
Drama	Page 36
Geography	Page 38
History	Page 40
ICT	Page 43
Mandarin	Page 46
Music	Page 49
Physical Education	Page 51
Physics	Page 53

Welcome to Kinabalu International School

At Kinabalu International School we follow a British-based curriculum, culminating in IGCSE and A Level examinations in Year 11 and Year 13 respectively. The IGCSE (International General Certificate of Secondary Education) programme sets a global standard for education. The externally accredited results are recognised by every college, university and major employer thus ensuring our students maintain a competitive edge in an increasingly globalised world. At KIS we understand the importance of a strong educational foundation and IGCSEs allow students to hone their higher-level thinking skills in preparation for Post 16 study and beyond.

We take great pride in offering a wide range of IGCSE subjects to ensure our curriculum directly meets the needs of all of our students. When small class sizes with highly experienced teachers blend with an ambitious mindset, we truly believe a student's potential is boundless. This is reflected in our academic results where we have a proud history of outstanding grades and students progressing to study at some of the world's very best universities.



We want all of our students to epitomise the 'well-rounded individual' and our wider curriculum is structured in such a way that it focuses on the development of their personality in addition to a transferrable skills set. All of our students have weekly Physical Education lessons and are encouraged to take full advantage of the array of student leadership opportunities on offer. Many of our Year 10 students participate in the Duke of Edinburgh Award scheme, an internationally recognised award where young people's achievements, aside from academia, are recognised and celebrated.

Creating a personalised IGCSE programme can, at first, appear a daunting prospect and the information in this brochure serves as an excellent starting point to help guide your decisions. The Secondary Leadership Team (details on the next page) are also always available to answer any questions you might have.

VISION, MISSION & VALUES

WE ARE A



**ACCREDITED
SCHOOL**

Our Vision: Nurturing Global Citizens

Our Mission:

At Kinabalu International School we are dedicated to providing an excellent education in a caring, respectful environment, challenging students to achieve their full potential as successful global citizens

Our Values:

We celebrate individual and cultural diversity

We are honest, responsible and accountable for our actions

We treat others with dignity and respect

We are supportive of each other and recognise the importance of each other's well-being

We work with others to make the world a better place

SECONDARY LEADERSHIP TEAM



Mrs Margaret Renshaw
DEPUTY PRINCIPAL AND
HEAD OF SECONDARY



Mrs Frances Colbeck
HEAD OF KEY STAGE 5



Mrs Hannah Beresford
HEAD OF KEY STAGE 3



Mr Stuart Bromley
HEAD OF KEY STAGE 4

The IGCSE Programme



**Cambridge Assessment
International Education**

The IGCSE Programme

All of the IGCSEs on offer at KIS are two year courses and are accredited by Cambridge Assessment International Education (CAIE). Most students will sit their IGCSE examinations at the end of Year 11, usually in May and June. The questions and content of IGCSEs tend to be more internationally orientated than the UK equivalent, allowing schools to deliver the courses with an element of flexibility and with cultural sensitivity in mind. The school is fully registered as an approved centre with Cambridge Assessment International Education, joining more 10,000 schools in over 160 countries in delivering these qualifications.

Tiers of entry

In some subjects there is only one tier of entry, with final grades ranging from A*-G. In other subjects candidates sit a different set of papers depending on their tier of entry. For these subjects there are two tiers: 'CORE' and 'EXTENDED'. The extended tier is more demanding, with grades range from A*-E, whereas the core tier grades range from C-G.

Please refer to the subject details for examination information regarding the tiers.

Coursework

Some subjects have a coursework component which will contribute towards their final overall mark. The percentage contribution will vary, subject to subject, and further details can be found on the course information pages.

Coursework for IGCSE examinations is usually marked internally and then moderated externally to guarantee that there is consistency across all schools. Some subjects have alternatives to coursework in the form of an extra examination paper. In subjects where there is a choice, the individual subject teachers will decide on the most appropriate pathway, at both an individual and class level.

The Options Process

At KIS our goal is to provide an enjoyable and satisfying range of qualifications that will suit the demands of our students. In order to do this, we ask that all students complete the Initial Choice Options Form as carefully as possible so that we can plan effectively for the next academic year.

This information will be used to create the 2024-2026 IGCSE option blocks, and students will be able to make their final choices in Term 3. Please note that after the final choices have been made, subjects will only run if the student numbers are sufficient to make a viable class size.

If you require any further information regarding the IGCSE programme, please do not hesitate to make an appointment to see me. It is important that only informed choices are made, and I am always happy to support, and advise, on any aspect of the options process.

A handwritten signature in black ink, which appears to read 'M. Renshaw'.

Mrs Margaret Renshaw

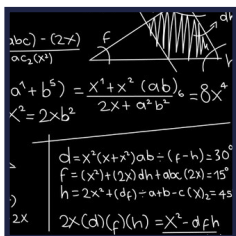
Deputy Principal / Head of Secondary

In KS4 the following core subjects are compulsory:

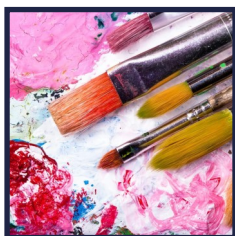
- ENGLISH LANGUAGE
- ENGLISH LITERATURE
- MATHEMATICS
- FOREIGN LANGUAGE, FRENCH, BAHASA MALAYSIA OR MANDARIN
- NON –EXAMINED PE

Mandarin may be chosen as a core subject or as an optional subject. This means that students can choose either Malay or French and also Mandarin as an optional subject.

Students will then choose five options from the following subjects. At least one of their options must be a science subject (Biology, Chemistry or Physics).



ADDITIONAL
MATHEMATICS



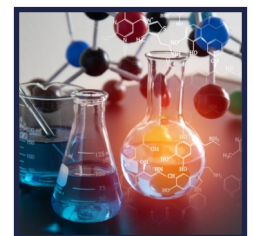
ART & DESIGN



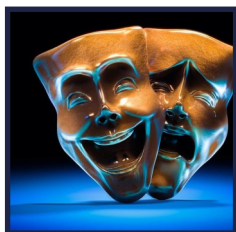
BIOLOGY



BUSINESS STUDIES



CHEMISTRY



DRAMA



GEOGRAPHY



HISTORY



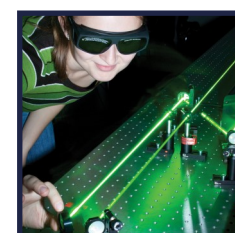
ICT



MUSIC



PHYSICAL
EDUCATION



PHYSICS



MANDARIN



FRENCH



BAHASA
MALAYSIA

How to choose your IGCSE courses

The subjects that you choose to study for the next two years will be far-reaching as they will form the basis for any further learning you do. There is no simple, golden rule to picking the right combination of IGCSE subjects, but the following suggestions might help:



- Pick a subject you can engage with, otherwise it will be difficult to stay motivated.
- Choose a combination of subjects that support a future career plan. For example, if you wish to study medicine you should pick IGCSE Chemistry and IGCSE Biology.
- Talk to older students about the course; they will be able to tell you exactly what it entails.
- Do not pick a subject merely because your friend is doing it!
- Play to your strengths. If you are good at a subject at KS3, then this is likely to continue at IGCSE and beyond.



CORE SUBJECTS

ENGLISH LANGUAGE

ENGLISH LITERATURE

MATHEMATICS

MODERN FOREIGN LANGUAGE





Candidates are encouraged to become appreciative and critical readers, writers, speakers and listeners.

How will the course be examined?

There are two components for the exam, a written paper and coursework.

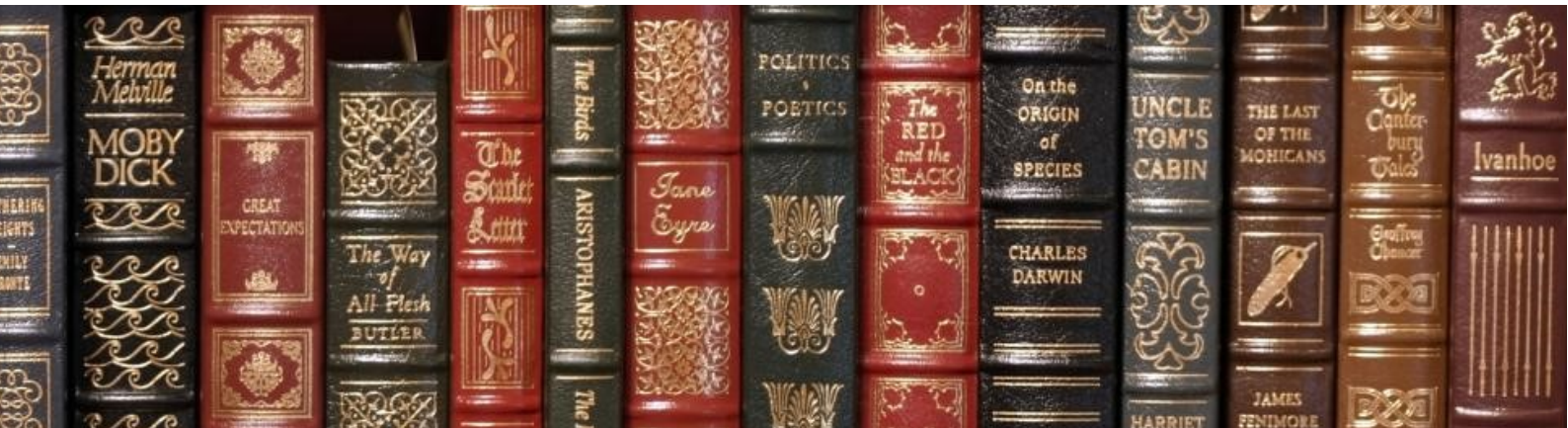
PAPER 1 <i>READING</i>	COURSEWORK
<ul style="list-style-type: none">• 2 hours• 50% of overall mark• 80 marks• Structured and extended writing questions• Questions will be based on three reading texts	<ul style="list-style-type: none">• Coursework Portfolio• 50% of overall mark• 80 marks• Three extended writing assignments• Internally assessed and externally moderated

Career Pathways

Every year thousands of students study Cambridge International IGCSEs. IGCSE English Language is a necessary qualification for many providers of further education. In particular, proficiency in English language can lead to the following careers.

BUSINESS	MEDIA	PUBLISHING	OTHER
ADVERTISING	BROADCAST-	EDITOR	LAW
MARKETING	JOURNALISM	PROOFREADER	PSYCHOLOGY
SALES	SCRIPTWRITER	WRITER	SOCIOLOGY
TOURISM			

CORE SUBJECTS



IGCSE ENGLISH LITERATURE 0475

Aims of the course

Cambridge IGCSE Literature (English) offers learners the opportunity to read, interpret, evaluate and respond to a range of literature in English. The range includes drama, prose and poetry from the works of Shakespeare to contemporary literature.

The course aims to develop learners who:

- enjoy the experience of reading literature
- understand and respond to literary texts in different forms and from different periods and cultures
- communicate an informed personal response appropriately and effectively
- appreciate different ways in which writers achieve their effects
- experience literature's contribution to aesthetic, imaginative and intellectual growth
- explore the contribution of literature to an understanding of areas of human concern.

Details of the course

The syllabus enables learners to read, interpret and evaluate texts through the study of literature in English. Learners develop an understanding of literal meaning, relevant contexts and of the deeper themes or attitudes that may be expressed. Through their studies, they learn to recognise and appreciate the ways in which writers use English to achieve a range of effects, and will be able to present an informed, personal response to the material they have studied.

The syllabus also encourages the exploration of wider and universal issues, promoting learners' better understanding of themselves and of the world around them.

How will the course be examined?

There are two components for the exam : the first written paper focusses on poetry and prose, while the second is an analysis of two extracts from both a contemporary play and Shakespearean text.

PAPER 1

POETRY & PROSE

- 1 hour 30 minutes
- 50% of overall mark
- 50 marks
- Two questions on two texts : One Poetry and one Prose
- Externally assessed

PAPER 2

DRAMA (Open Text)

- 1 hour 30 minutes
- 50% of overall mark
- 50 marks
- Two questions on two texts
- Externally assessed

Career Pathways

Cambridge International IGCSE English Literature provides a suitable foundation for the study of the following careers.

BUSINESS

ADVERTISING

MARKETING

SALES

TOURISM

MEDIA

BROADCASTING

JOURNALISM

SCRIPTWRITER

PUBLISHING

EDITOR

PROOFREADER

WRITER

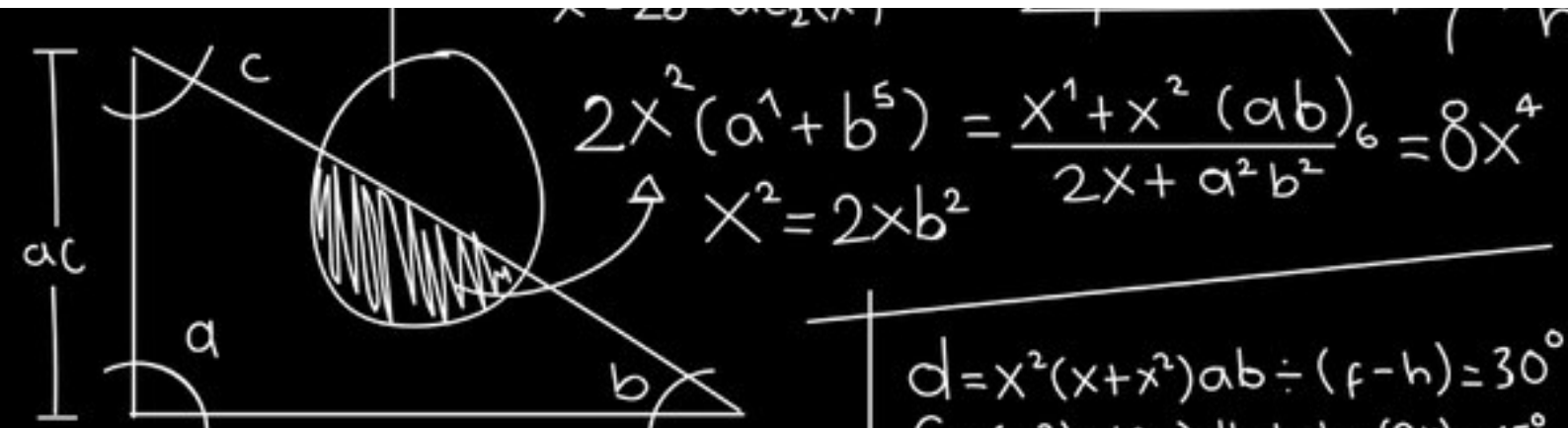
OTHER

LAW

PSYCHOLOGY

SOCIOLOGY

CORE SUBJECTS



IGCSE MATHEMATICS 0580

Aims of the course

The aims of the course are to increase the mathematical skills of the individual and to enable them to apply their skills when solving a variety of problems.

The aims are to enable students to:

- develop an understanding of mathematical principles, concepts and methods
- develop a feel for number
- apply mathematics in everyday situations
- analyse and solve problems, present the solutions clearly, and check and interpret the results
- develop an ability to apply mathematics in other subjects, particularly science and technology
- develop the ability to reason logically, make deductions and inferences, and draw conclusions
- appreciate patterns and relationships in mathematics and make generalisations
- appreciate the interdependence of different areas of mathematics

Details of the course

All students will study the following topics:

- Number
- Algebra and graphs
- Geometry
- Probability
- Coordinate geometry
- Mensuration
- Statistics
- Trigonometry
- Transformations
- Vectors

How will the course be examined?

Students can sit for either the Core or the Extended tier. Each tier has two examination papers.

CORE	EXTENDED
<p>PAPER 1 (Core)</p> <ul style="list-style-type: none">• 1 hour 30 minutes• 50% of overall mark• 80 marks• Structured and unstructured questions• Use of a calculator is not allowed <p>PAPER 3 (Core)</p> <ul style="list-style-type: none">• 1 hour 30 minutes• 50% of overall mark• 80 marks• Structured and unstructured questions• A scientific calculator is required	<p>PAPER 2 (Extended)</p> <ul style="list-style-type: none">• 2 hours• 50% of overall mark• 100 marks• Structured and unstructured questions• Use of a calculator is not allowed <p>PAPER 4 (Extended)</p> <ul style="list-style-type: none">• 2 hours• 50% of overall mark• 100 marks• Structured and unstructured questions• A scientific calculator is required

Career Pathways

Studying Mathematics can lead to a wide variety of different careers:

BUSINESS / FINANCE	ENGINEERING	SCIENCE	TECHNOLOGY
ACTUARY ACCOUNTANT INVESTMENT BROKER ECONOMIST LOGISTICS RISK ANALYST TECHNICAL SUPPORT	AERONAUTICAL ENGINEERING ARCHITECTURE CHEMICAL DESIGN ELECTRICAL AND ELECTRONIC MANUFACTURING RESEARCH	ASTROPHYSICS BIOLOGIST CHEMIST MEDICAL SCIENCES PHYSICIST	AI DEVELOPMENT COMMUNICATION GAME DESIGNER PROGRAMMER ROBOTICS SOFTWARE DEVELOPMENT SYSTEMS DEVELOPMENT

CORE SUBJECTS



IGCSE MODERN FOREIGN LANGUAGES

Students can choose from:

French 0520 | Malay 0546 | Mandarin 0547

Details of the course

All candidates will study the following topics:

Aims of the course

A Cambridge IGCSE in a modern foreign language is accepted by universities and employers as proof of linguistic ability and understanding. The course encourages learners to develop lifelong skills, including:

the ability to use a foreign language as a means of practical communication

- insight into the culture and civilisation of countries where the language is spoken
- a positive attitude towards language learning, towards the speakers of other languages, and towards other cultures and civilisations
- techniques which can be applied to other areas of learning, such as analysis and memory skills
- a sound foundation for progression to employment or further study.



How will the course be examined?

French 0520 | Assessment Overview

All candidates take all four papers. Candidates will be eligible for grades A* to G

PAPER 1

LISTENING

- Approximately 50 minutes
- Listening 25%
- 40 marks
- Candidates listen to a number of recordings and answer multiple-choice and matching questions.
- Externally assessed

PAPER 2

READING

- 1 hour
- Reading 25%
- 45 marks
- Candidates read a number of texts and answer multiple-choice and matching questions as well as questions requiring short answers.
- Externally assessed

PAPER 3

SPEAKING

- Approximately 10 minutes
- Speaking 25%
- 40 marks
- Candidates complete one role play and conversations on two topics.
- Internally assessed and externally moderated

PAPER 4

WRITING

- 1 hour
- Writing 25%
- 45 marks
- Candidates complete one form-filling task, one directed writing task and one task in the format of an email/letter or article/blog.
- Externally assessed

Malay 0546 | Assessment Overview

All candidates take all four papers. Candidates will be eligible for grades A* to G

PAPER 1

LISTENING

- Approximately 50 minutes
- Listening 25%
- 40 marks
- Candidates listen to a number of recordings and answer multiple-choice and matching questions.
- Externally assessed

PAPER 2

READING

- 1 hour
- Reading 25%
- 45 marks
- Candidates read a number of texts and answer multiple-choice and matching questions as well as questions requiring short answers.
- Externally assessed

PAPER 3

SPEAKING

- Approximately 10 minutes
- Speaking 25%
- 40 marks
- Candidates complete one role play and conversations on two topics.
- Internally assessed and externally moderated

PAPER 4

WRITING

- 1 hour
- Writing 25%
- 45 marks
- Candidates complete one form-filling task, one directed writing task and one task in the format of an email/letter or article/blog.
- Externally assessed

Mandarin 0547 | Assessment Overview

All candidates take all four papers. Candidates will be eligible for grades A* to G

PAPER 1

LISTENING

- 40 minutes
- 25% of overall mark
- 30 marks
- Candidates listen to a number of recordings and answer multiple-choice and matching questions
- Externally assessed

PAPER 2

READING

- 1 hour 15 minutes
- 25% of overall mark
- 40 marks
- Candidates read a number of texts and answer multiple-choice and matching questions as well as questions requiring short answers.
- Externally assessed

PAPER 3

SPEAKING

- 10 minutes
- 25% of overall marks
- 40 marks
- Candidates complete one role play and conversations on two topics. Internally assessed and externally moderated

PAPER 4

WRITING

- 1 hour 15 minutes
- 25% of overall marks
- 45 marks
- Candidates complete one form-filling task, one directed writing task and one task in the format of an email/letter or article/blog
- Externally assessed

Cambridge International IGCSE Modern Foreign Languages provide a suitable foundation for the study of many different disciplines. Most universities favour students who possess an IGCSE qualification in a foreign language.

CAREER PATHWAYS	
INTERPRETER	BUSINESS, LOGISTICS AND FINANCE CAREERS
TRANSLATOR	MARKETING, ADVERTISING AND PUBLIC RELATIONS CAREERS
MODERN LANGUAGE JOBS IN EDUCATION	EVENT MANAGEMENT
INTERNATIONAL DEVELOPMENT WORKER	HOSPITALITY AND TOURISM MANAGEMENT
DIPLOMACY	BROADCAST JOURNALIST



OPTIONAL SUBJECTS

ADDITIONAL MATHEMATICS

ART & DESIGN

BIOLOGY

BUSINESS STUDIES

CHEMISTRY

DRAMA

GEOGRAPHY

HISTORY

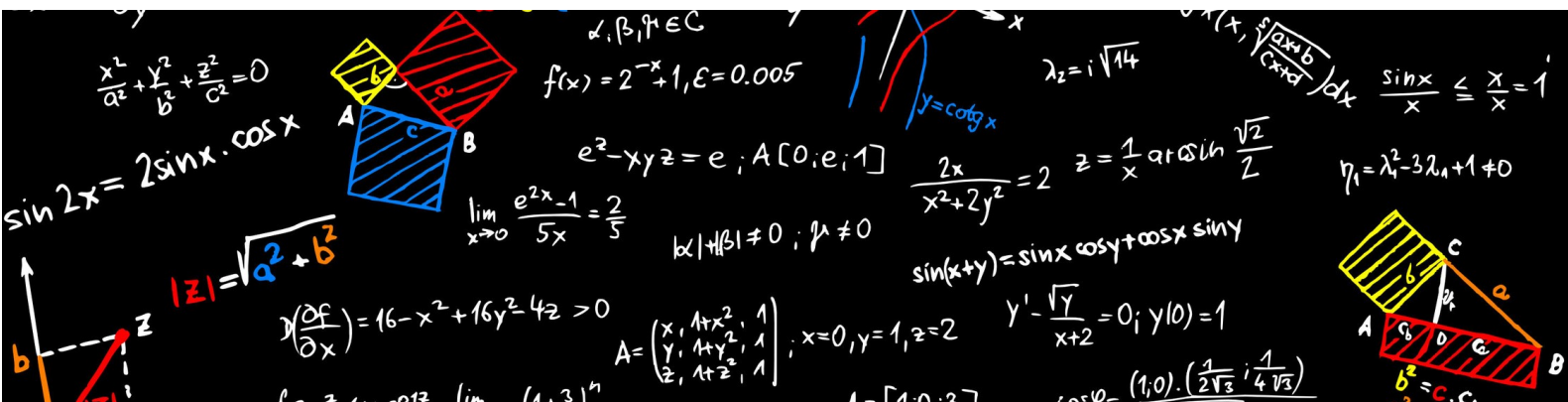
ICT

MUSIC

PHYSICAL EDUCATION

PHYSICS

OPTIONAL SUBJECT



IGCSE ADDITIONAL MATHEMATICS 0606

Aims of the course

IGCSE Additional Mathematics supports learners in building competency, confidence and fluency in their techniques and mathematical understanding. This course helps learners to develop a feel for quantity, patterns and relationships. Learners will develop their reasoning, problem-solving and analytical skills in a variety of contexts.

The course aims to:

- consolidate and extend their mathematical skills
- further develop their knowledge of mathematical concepts and principles
- appreciate the interconnectedness of mathematical knowledge
- devise mathematical arguments
- develop the confidence to apply their mathematical skills and knowledge in appropriate situations
- develop creativity and perseverance in the approach to problem solving

Details of the course

The broad areas of study are:

- Functions
- Quadratic functions
- Equations, inequalities and graphs
- Coordinate geometry of the circle
- Factors of polynomials
- Simultaneous equations
- Logarithmic and exponential functions
- Straight line graphs
- Circular measure
- Trigonometry
- Permutations and combinations
- Series
- Vectors
- Differentiation and integration

How will the course be examined?

There are two components for the examination.

PAPER 1 (Non Calculator)	PAPER 2 (Calculator)
<ul style="list-style-type: none">• 2 hours• 50% of overall mark• 80 marks• Candidates answer all questions• Use of a calculator is not allowed	<ul style="list-style-type: none">• 2 hours• 50% of overall mark• 80 marks• Candidates answer all questions• A scientific calculator is required

Career Pathways

Cambridge International IGCSE Additional Mathematics provides a foundation for the study of:

BUSINESS / FINANCE	ENGINEERING	SCIENCE	TECHNOLOGY
ACTUARY ACCOUNTANT INVESTMENT BROKER ECONOMIST LOGISTICS RISK ANALYST TECHNICAL SUP- PORT	AERONAUTICAL ENGINEERING ARCHITECTURE CHEMICAL ENGINEERING DESIGN ELECTRICAL AND ELECTRONIC ENGINEERING MANUFACTURING RESEARCH & DEVELOPMENT	ASTROPHYSICS BIOLOGIST CHEMIST MEDICAL SCIENCES PHYSICIST	AI DEVELOPMENT COMMUNICATION GAME DESIGNER PROGRAMMER ROBOTICS SOFTWARE DEVELOPMENT SYSTEMS DEVELOPMENT

OPTIONAL SUBJECT



IGCSE ART AND DESIGN 0400

Aims of the course

Cambridge IGCSE Art & Design encourages a range of skills, stimulates aesthetic awareness, knowledge and critical understanding of art, and provides opportunities for learners to develop a range of skills. Crucially, a personal and independent perspective is encouraged at all times. The syllabus is designed to accommodate a wide range of abilities, materials and resources.

The syllabus is designed for learners who wish to explore practical work through a range of two- and/or three-dimensional processes and include new media and technologies in addition to traditional media and processes.

The IGCSE Art & Design course aims to develop investigative, analytical, experimental, interpretative, practical, technical and expressive skills which aid effective and independent learning.

Details of the course

Cambridge IGCSE Art & Design has been designed to offer a broad choice of media and approaches so that candidates can produce a personal response and schools can play to their strengths in terms of staff expertise and interests.

The broad areas of study are:

- Painting and related media
- Three-dimensional Design
- Photography, digital and lens media
- Graphic communication
- Textiles and fashion

How will the course be examined?

There are two components for the examination.

COMPONENT 1 COURSEWORK	COMPONENT 2 EXTERNALLY SET ASSIGNMENT
<ul style="list-style-type: none">• Coursework 50%• 100 marks• Candidates research, develop and realise a project from one or more of the areas of study and should explore a theme.• There are two parts to the coursework:<ul style="list-style-type: none">a) A portfolio andb) A final outcome• Externally assessed	<ul style="list-style-type: none">• 8 hours• 100 marks• 50%• Candidates respond to one starting point set by the Cambridge International. Candidates may produce work from the same area of study as Component 1, but they do not have to.• There are two parts to the assignment:<ul style="list-style-type: none">a) supporting studies andb) a final outcome, produced during a supervised test of 8 hours' total duration• Externally assessed

Career Pathways

Cambridge International IGCSE Art and Design provides a foundation for the study of:

ART	DESIGN	MEDIA	TECHNOLOGY
ARTIST	ARCHITECTURE	ADVERTISING	ANIMATOR
ART HISTORIAN	FASHION DESIGN	PHOTOGRAPHY	GAME DESIGN
ART VALUER	INTERIOR DESIGN	ILLUSTRATOR	GRAPHIC DESIGN
ART THERAPIST	PRODUCT DESIGNER	MULTIMEDIA DESIGNER	WEB DEVELOPER
ART CONSULTANT	FURNITURE DESIGNER	FILM DIRECTOR	USER INTERFACE DESIGNER
MUSEUM CURATOR	CONCEPT ARTIST	ADVERTISING DIRECTOR	DIGITAL DEVELOPER
ART CONSULTANT	LANDSCAPE / THEME PARK / GOLF COURSE DESIGNER	VIDEO EDITOR	CINEMATOGRAPHER

OPTIONAL SUBJECT

IGCSE BIOLOGY 0610

Aims of the course

Cambridge IGCSE Biology enables learners to:

- Increase their understanding of the technological world
- Take an informed interest in scientific matters happening globally
- Recognise the usefulness (and limitations) of scientific method, and how to apply this to other disciplines and in everyday life
- Develop relevant attitudes, such as a concern for accuracy and precision, objectivity, integrity, enquiry, initiative and inventiveness
- Develop an interest in, and care for, the environment
- Better understand the influences and limitations placed on scientific study
- Develop an understanding of the scientific skills essential for both further study and

Details of the course

Candidates study the following topics:

- 1 Characteristics and classification of living organisms
- 2 Organisation of the organism
- 3 Movement in and out of cells
- 4 Biological molecules
- 5 Enzymes
- 6 Plant nutrition
- 7 Human nutrition
- 8 Transport in plants
- 9 Transport in animals
- 10 Diseases and immunity
- 11 Gas exchange in humans
- 12 Respiration
- 13 Excretion in humans
- 14 Coordination and response
- 15 Drugs
- 16 Reproduction
- 17 Inheritance
- 18 Variation and selection
- 19 Organisms and their environment
- 20 Human influences on ecosystems
- 21 Biotechnology and genetic modification

How will the course be examined?

All candidates take three components.

Core students do Paper 1, Paper 3 and Paper 6. Grades for core range from C—G.

Extended students do Paper 2, Paper 4 and Paper 6. Grades for extended range from A* —G.

PAPER 1

MULTIPLE CHOICE

- 45 minutes
- 30% of overall mark
- 40 marks
- 40 multiple choice questions based on core content
- Externally assessed

PAPER 3

THEORY

- 1 hour 15 minutes
- 50% of overall mark
- 80 marks
- Short answer and structured questions on the core content
- Externally assessed

PAPER 2

MULTIPLE CHOICE

- 45 minutes
- 30% of overall mark
- 40 marks
- 40 multiple choice questions based on extended content
- Externally assessed

PAPER 4

THEORY

- 1 hour 15 minutes
- 50% of overall mark
- 80 marks
- Short answer and structured questions on the extended content
- Externally assessed

PAPER 6

ALTERNATIVE TO PRACTICAL

- 1 hour
- 20% of overall mark
- 40 marks
- Questions will be based on the experimental skills
- Externally assessed

Career Pathways

Cambridge International IGCSE Biology provides a foundation for the study of:

MEDICAL CARE

DOCTOR

NURSES

PHYSIOTHERAPIST

VETERINARY SURGEON

VETERINARY NURSE

SCIENCE

BIOCHEMIST

BIOLOGIST: MARINE, GENETICS,
EVOLUTIONARY AND MANY MORE

FORENSIC SCIENCE

PHARMACOLOGY

ZOOLOGY

ENVIRONMENT

ANIMAL HUSBANDRY

AGRICULTURE

CONSERVATION BIOLOGIST

SPORT AND FITNESS

FITNESS COACH

FOOD TECHNOLOGIST

SPORT THERAPIST

OPTIONAL SUBJECT

IGCSE BUSINESS STUDIES 0450

Aims of the course

Cambridge IGCSE Business Studies is accepted by universities and employers as proof of an understanding of business concepts and techniques across a range of different types of businesses. Learners will be able to:

- understand different forms of business organisations,
- understand the environments in which businesses operate
- understand business functions such as marketing, operations and finance
- appreciate the role of people in business success

They will also gain lifelong skills, including:

- the ability to calculate and interpret business data

Details of the course

The broad areas of study are:

1. Understanding business activity
2. People in business
3. Marketing
4. Operations management
5. Financial information and decisions
6. External influences on business activity

How will the course be examined?

There are two components for the examination.

PAPER 1

- 1 hour 30 mins
- 50% of overall mark
- 80 marks
- Four questions requiring a mixture of short answers and structured data responses

PAPER 2

- 1 hour 30 mins
- 50% of overall mark
- 80 marks
- Four questions based on a case study, provided as an insert with the paper
- Candidates answer all questions

Career Pathways

Cambridge International IGCSE Business Studies provides a foundation for the study of:

BUSINESS

BUSINESS OWNER

ECONOMIST

FINANCE

MARKETING

FINANCIAL SERVICES

ACCOUNTANCY

ACTUARY

BANKING

INSURANCE

LEISURE MANAGEMENT

HOTEL MANAGEMENT

SPORT MANAGEMENT

TOURISM

TECHNOLOGY

DATA ANALYST

OPERATIONS

PROJECT
MANAGEMENT

OPTIONAL SUBJECT

IGCSE CHEMISTRY 0620

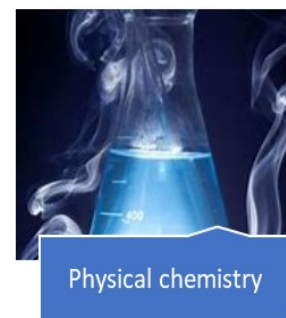
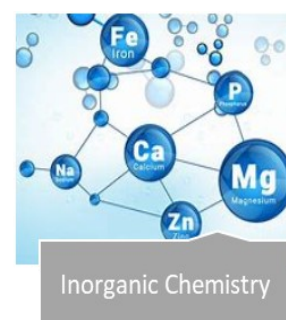
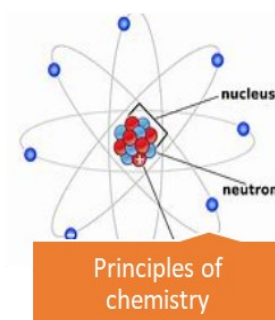
Aims of the course

Cambridge IGCSE Chemistry enables learners to:

- increase their understanding of the technological world
- take an informed interest in scientific matters
- recognise the usefulness (and limitations) of scientific method, and how to apply this to other disciplines and in everyday life
- develop relevant attitudes, such as a concern for accuracy and precision, objectivity, integrity, enquiry, initiative and inventiveness
- develop an interest in, and care for, the environment, better understand the influence and limitations placed on scientific study
- develop an understanding of the scientific skills essential for both further study and everyday life.

Details of the course

The broad areas of study are:



The course aims to enable learners to acquire sufficient knowledge and understanding to become confident citizens in a technological world and develop an informed interest in scientific matters and be suitably prepared for studies beyond Cambridge IGCSE.

How will the course be examined?

All candidates take **three** components.

Core students do Paper 1, Paper 3 and Paper 6. Grades for core range from C—G.

Extended students do Paper 2, Paper 4 and Paper 6. Grades for extended range from A* —G.

PAPER 1

MULTIPLE CHOICE

- 45 minutes
- 30% of overall mark
- 40 marks
- 40 multiple choice questions based on core content
- Externally assessed

PAPER 3

THEORY

- 1 hour 15 minutes
- 50% of overall mark
- 80 marks
- Short answer and structured questions on the core content
- Externally assessed

PAPER 6

ALTERNATIVE TO PRACTICAL

- 1 hour
- 20% of overall mark
- 40 marks
- Questions will be based on the experimental skills
- Externally assessed

PAPER 2

MULTIPLE CHOICE

- 45 minutes
- 30% of overall mark
- 40 marks
- 40 multiple choice questions based on extended content
- Externally assessed

PAPER 4

THEORY

- 1 hour 15 minutes
- 50% of overall mark
- 80 marks
- Short answer and structured questions on the extended content
- Externally assessed

Career Pathways

Cambridge International IGCSE Chemistry provides a foundation for the study of:

ENGINEERING

CHEMICAL ENGINEERING

MANUFACTURING

PETROCHEMICALS

RENEWABLE ENERGY

SCIENCE

CHEMIST

FORENSICS

PHARMACOLOGY

RESEARCH

ENVIRONMENT

AGRICULTURE

FOOD CHEMIST

CONSERVATION

GEOLOGY

MEDICINAL CARE

MEDICINE

PHARMACEUTICALS

SPORTS MEDICINE

VETERINARY SURGEON

OPTIONAL SUBJECT



IGCSE DRAMA 0411

Aims of the course

Through practical and theoretical study, the Cambridge IGCSE Drama syllabus encourages students to understand and enjoy drama by:

- developing their performance skills, both individually and in groups
- understanding the role of actor, director and designer in creating a piece of theatre
- considering ways in which ideas and feelings can be communicated to an audience
- discovering the performance possibilities of plays and other dramatic stimuli
- devising dramatic material of their own.

The course aims to:

- develop candidates' understanding of drama through practical and theoretical study
- To develop the candidates' ability to communicate effectively and confidently in a broad range of scenarios both academically, professionally and socially
- enable candidates to understand the role of actor, director and designer in creating a piece of theatre
- develop candidates' acting skills, both individually and in groups
- enable candidates to develop their skills in devising original drama
- help candidates communicate feelings and ideas to an audience

- foster understanding of the performance process and enable candidates to evaluate the various stages of that process
- encourage enjoyment of drama.

Details of the course

Through practical and theoretical study, learners develop an understanding and enjoyment of drama, developing group and individual skills and studying ways to communicate ideas and feelings to an audience.

Candidates work with:

- extended extracts from published plays
- stimuli (short titles, poems, pictures, songs, historical events, stories) for devising dramatic pieces
- their own choice of dramatic repertoire
- dramatic material of their own devising

Learners develop their individual and group performance skills, the demonstration of which forms part of the final assessment

How will the course be examined?

All candidates take two components, one of which is coursework based.

Candidates are eligible for grades A* - G.

PAPER 1
WRITTEN EXAMINATION

- 2 hours 30 mins
- 40% of overall mark
- 80 marks
- Candidates answer all questions in Section A , choose two questions from Section B (one compulsory and one question from a choice of two) .
Both questions from Section C
- Externally assessed.

PAPER 2
COURSEWORK

- 60% of overall mark
- 120 marks

Candidates submit:

- One individual performance based on an extract from a play
- One group performance based on an original devised piece
- One group performance based on an extract from a play
- Internally assessed and externally moderated

Career Pathways

Cambridge International IGCSE Drama provides a foundation for the study of:

BUSINESS	MEDIA	THEATRE	OTHER
ADVERTISING	AUDIOVISUAL ENGINEER	ACTOR	ANIMATION
MARKETING	DIRECTOR	SOUND MANAGER	EVENT MANAGEMENT
PROMOTIONAL MANAGER	EDITOR	STAGE MANAGER	HOSPITALITY
SALES	PHOTOGRAPHY	THEATRE MANAGER	RECREATIONAL MANAGEMENT
	PRODUCER		TOURISM

OPTIONAL SUBJECT**IGCSE GEOGRAPHY 0460****Aims of the course**

Cambridge IGCSE Geography candidates develop lifelong skills, including:

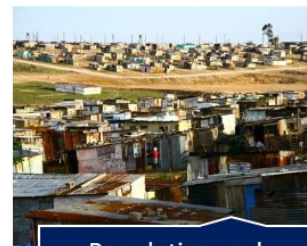
- an understanding of the processes which affect physical and human environments
- an understanding of location on a local, regional and global scale
- the ability to use and understand geographical data and information
- an understanding of how communities around the world are affected and constrained by different environments.

The IGCSE Geography course aims to enable students to have:

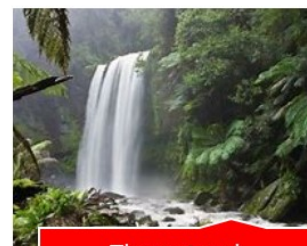
- an awareness of the characteristics, distribution and processes affecting contrasting physical and human environments
- an understanding of the ways in which people interact with each other and with their environment
- an awareness of the opportunities and constraints presented by different environments
- an appreciation of and concern for the environment
- an appreciation of the earth including its people, places, landscapes, natural processes and phenomena.

Details of the course

The course has three main themes:



Population and
settlement



The natural
environment



Economic
development

How will the course be examined?

All candidates take three components. Candidates are eligible for grades A* - G.

PAPER 1	PAPER 2	PAPER 4
GEOGRAPHICAL THEMES	GEOGRAPHICAL SKILLS	ALTERNATIVE TO COURSEWORK
<ul style="list-style-type: none"> • 1 hour 45 minutes • 45% of overall mark • 75 marks, weighted to 100 marks • Candidates answer three questions, each worth 25 marks. Candidates must answer one question from each section • Externally assessed 	<ul style="list-style-type: none"> • 1 hour 30 minutes • 27.5% of overall • 60 marks • Candidates answer all the questions • Externally assessed 	<ul style="list-style-type: none"> • 1 hour 30 minutes • 27.5% of overall • 60 marks • Candidates answer two compulsory questions, completing a series of written tasks. • Externally assessed

Career Pathways

Cambridge International IGCSE Geography provides a foundation for the study of:

ENVIRONMENTAL	BUSINESS	GEOGRAPHICAL	SCIENCE
AGRICULTURAL CONSULTANT CONSERVATION ECOLOGY ENVIRONMENTAL MANAGEMENT	LOCATION MANAGER LOGISTICS MARKET RESEARCH	LAND DEVELOPER MINING SURVEYOR GEOGRAPHICAL INFORMATION SYSTEMS TOURISM CONSULTANT	BOTANIST ECOLOGY GEOLOGY MARINE BIOLOGY METEOROLOGY

OPTIONAL SUBJECT



IGCSE HISTORY 0470

Aims of the course

Cambridge IGCSE History offers the opportunity to study world history from the nineteenth century to the beginning of the twenty-first century. It encourages learners to raise questions and to develop and deploy historical skills, knowledge and understanding in order to provide historical explanations. Learners will explore history from a diversity of perspectives, including social, economical, cultural and political, and are given the opportunity to:

- develop an interest in and enthusiasm for learning about and understanding the past
- explore historical concepts such as cause and consequence, change and continuity, and similarity and difference
- appreciate historical evidence and how to use it
- gain a greater understanding of international issues and inter-relationships
- learn how to present clear, logical arguments.

Details of the course

All students study:

- The twentieth century: international relations since 1919—1989

In addition, all candidates must also study at least one of the following Depth Studies:

The first world war 1914-1918

Germany, 1918-45

The United States, 1919-41



How will the course be examined?

All candidates take three components. Candidates will do Paper 1, Paper 2 and Paper 4.

Candidates are eligible for grades A* - G.

PAPER 1

WRITTEN PAPER

- 2 hours
- 40% of overall Mark
- 60 marks
- candidates answer 2 questions from section 8 core content and one question from section b depth studies
- All questions are in the form of structured essays split into three parts: (a), (b) and (c)

PAPER 2

- 2 hours
- 33% of overall marks
- 50 marks
- Candidates answer 6 questions on one prescribed topic taken from the core content
- There is a range of source material relating to each prescribed topic
- Externally assessed

PAPER 4

ALTERNATIVE TO COURSEWORK

- One hour
- 27% of overall marks
- 40 marks
- Candidates answer one question on a depth study
- Externally assessed

Career Pathways

Cambridge International IGCSE History provides a foundation for the study of:

LEGAL PROFESSION	MEDIA	PUBLIC SECTOR	OTHER
BARRISTER	EDITOR	CIVIL SERVICE	ACCOUNTANT
PATENT AGENT	JOURNALIST	MUSEUM CURATOR	ANTIQUE DEALER
SOLICITOR	PRODUCER	POLITICAL ADVISOR	ARCHEOLOGY
		PUBLIC RECORDS	

OPTIONAL SUBJECT



IGCSE INFORMATION AND
COMMUNICATION TECHNOLOGY 0417

Aims of the course

Cambridge IGCSE Information and Communication Technology encourages learners to develop lifelong skills, including:

- understanding and using applications
- using Information and Communication Technology (ICT) to solve problems
- analyzing, designing, implementing, and testing and evaluating ICT systems
- understanding the implications of technology in society
- awareness of the ways ICT can help in home, learning and work environments.

The aims are to develop:

- knowledge of ICT including new and emerging technologies
- autonomous and discerning use of ICT
- skills to enhance work produced in a range of contexts
- skills to analyse, design, implement, test and evaluate ICT systems
- skills to consider the impact of current and new technologies on methods of working in the outside world and on social, economic, ethical and moral issues
- ICT-based solutions to solve problems
- the ability to recognise potential risks when using ICT, and use safe, secure and responsible practice.

Details of the course

- 1 Types and components of computer systems
- 2 Input and output devices
- 3 Storage devices and media
- 4 Networks and the effects of using them
- 5 The effects of using IT
- 6 ICT applications
- 7 The systems life cycle
- 8 Safety and security
- 9 Audience
- 10 Communication
- 11 File management
- 12 Images
- 13 Layout
- 14 Styles
- 15 Proofing
- 16 Graphs and charts
- 17 Document production
- 18 Database
- 19 Presentations
- 20 Spreadsheets
- 21 Website authoring

How will the course be examined?

There are three components for the examination. Paper 2 and 3 are practical examinations.

Candidates are eligible for A* - G.

PAPER 1

THEORY

- 1 hour 30 mins
- 40% of overall marks
- 80 marks
- Questions will cover some sections 1 to 21 of the subject content
- All questions are compulsory
- Externally assessed

PAPER 2

DOCUMENT PRODUCTION DATABASES AND PRESENTATIONS

- 2 hours 15 minutes
- 30% of overall marks
- 70 marks
- This test assesses the practical skills needed to use the applications covered in sections 17, 18 and 19 of the subject content
- Candidates must demonstrate the practical skills relevant to sections 11 to 16
- All tasks are compulsory
- externally assessed

PAPER 3

SPREADSHEETS AND WEBSITE AUTHORIZING

- 2 hrs 15 mins
- 30% of overall marks
- 70 marks
- This test assesses the practical skills needed to use the applications covered in sections 20 and 21 of the subject content
- Candidates must demonstrate the practical skills relevant to sections 11 to 16
- All tasks are compulsory
- Externally assessed

Career Pathways

Cambridge International IGCSE Information and Communication Technology provides a foundation for the study of:

BUSINESS	ENGINEERING	MEDIA	TECHNOLOGY
DATABASE MANAGER INFORMATION ANALYST LOGISTICS SYSTEM ANALYST TECHNICAL SUPPORT	AIR TRAFFIC CONTROLLER CAD / CAM MANUFACTURING PRODUCTION ENGINEER	ANIMATION AUDIO/ VISUAL ENGINEER MULTIMEDIA SPECIALIST WEBSITE DEVELOPER	APP PROGRAMMER GAME DESIGNER NETWORK MANAGER ROBOTICS SOFTWARE DEVELOPER

OPTIONAL SUBJECT**IGCSE MANDARIN 0547****Aims of the course**

The Cambridge IGCSE Mandarin Chinese syllabus develops a set of transferable skills for understanding and communicating in everyday situations in Chinese. Learners begin to develop cultural awareness of countries and communities where Chinese is spoken. They acquire the essential linguistic skills required for progression to further studies or employment.

The aims are to:

- develop the language proficiency required to communicate effectively in Mandarin Chinese at level A2 (CEFR Basic User)
- offer insights into the culture and society of countries and communities where Chinese is spoken
- develop awareness of the nature of language and language learning
- encourage positive attitudes towards speakers of other languages and a sympathetic approach to other cultures
- provide enjoyment and intellectual stimulation
- develop transferable skills (e.g. memorising, drawing of inferences) to complement other areas of the curriculum

Details of the course

The subject content is organised in five broad topic areas (A–E below). These provide contexts for the acquisition of vocabulary and the study of grammar and structures. The study of these topic areas enables students to gain an insight into countries and communities where Chinese is spoken. The five topic areas are listed below.

- A. Everyday activities
- B. Personal and social life
- C. The world around us
- D. The world of work
- E. The international world

Candidates will be expected to read and understand a variety of written and spoken texts on familiar topics. They will also have opportunities to write in Chinese on familiar, everyday topics, and to speak the language by taking part in everyday conversations.

How will the course be examined?

There are two components for the examination.

Candidates are eligible for A* - G.

PAPER 1

LISTENING

- 40 minutes
- 25% of overall mark
- 30 marks
- Candidates listen to a number of recordings and answer multiple-choice and matching questions
- Externally assessed

PAPER 2

READING

- 1 hour 15 minutes
- 25% of overall mark
- 40 marks
- Candidates read a number of texts and answer multiple-choice and matching questions as well as questions requiring short answers.
- Externally assessed

PAPER 3

SPEAKING

- 10 minutes
- 25% of overall marks
- 40 marks
- Candidates complete one role play and conversations on two topics.
Internally assessed and externally moderated

PAPER 4

WRITING

- 1 hour 15 minutes
- 25% of overall marks
- 45 marks
- Candidates complete one form-filling task, one directed writing task and one task in the format of an email/letter or article/blog
- Externally assessed

Career Pathways

Cambridge International IGCSE Mandarin provides a useful foundation for the study of:

BUSINESS	FINANCIAL SERVICES	LEISURE MANAGEMENT	OTHERS
BUSINESS OWNER	ACCOUNTANCY	EVENT MANAGEMENT	EDUCATION
ECONOMIST	ACTUARY	HOTEL MANAGEMENT	JOURNALISM
FINANCE	BANKING	SPORT MANAGEMENT	LAWYER
MARKETING	INSURANCE	TOURISM	PROJECT

OPTIONAL SUBJECT**IGCSE MUSIC 0410****Aims of the course**

The Cambridge IGCSE Music syllabus offers students the opportunity to develop their own practical musical skills through performing and composing. They also develop their listening skills by studying music from the main historical periods and styles of Western music as well as from selected non-Western traditions. The emphasis of the syllabus is as much on developing lifelong musical skills as on acquiring knowledge.

Learners studying Cambridge IGCSE Music are given the opportunity to:

- listen to and learn about music from a wide range of historical periods and major world cultures
- develop their skills in performing music, both individually and in a group with other musicians
- develop their skills in composing music in a style of their own choice.

Details of the course

When studying the Cambridge IGCSE Music syllabus, learners listen to, perform and compose music, encouraging aesthetic and emotional development, self-discipline and, importantly, creativity. As a result, learners enhance their appreciation and enjoyment of music, an achievement that forms an ideal foundation for future study and enhances lifelong musical enjoyment.

Learners study music of many styles; each style is placed in its historical and cultural context, and learners are encouraged to be perceptive, sensitive and critical when listening. Although the majority of the syllabus examines Western European music, the music of other cultures are also represented.

Learners are expected to play an instrument or sing at an ABRSM or Trinity grade level 2-3 prior to beginning the IGCSE music course. Daily practice is required and, therefore must have an instrument to practice at home. It is strongly recommended that students take private lessons on their instrument or voice.

How will the course be examined?

There are three components for the examination.

Candidates are eligible for A* - G.

COMPONENT 1	COMPONENT 2	COMPONENT 3
<i>LISTENING</i>	<i>PERFORMING</i>	<i>COMPOSING</i>
<ul style="list-style-type: none">• 1 hour 15 minutes• 40% of overall mark• 70 marks• Written examination based on CD recordings• Externally assessed	<ul style="list-style-type: none">• Coursework• 30% of overall mark• 50 marks• Two prepared performances, one individual and one ensemble• Internally marked/ externally moderated	<ul style="list-style-type: none">• Coursework• 30% of overall mark• 100 marks scaled to 50 marks• Two contrasting compositions• Internally marked/ externally moderated

Career Pathways

Cambridge International IGCSE Music provides a foundation for the study of:

BUSINESS	MEDIA	MUSIC	OTHERS
ADVERTISING MARKETING PROMOTIONAL MANAGER SALES A&R MANAGER LICENSING REPRESENTATIVE	ACOUSTIC ENGINEER AUDIOVISUAL ENGINEER DIRECTOR EDITOR PHOTOGRAPHY PRODUCER	COMPOSER CONDUCTOR DISC JOCKEY MUSICIAN SOUND MANAGER THEATRE MANAGER	EVENT MANAGEMENT HOSPITALITY RECREATIONAL MANAGEMENT TOURISM ENTERTAINMENT LAWYER

OPTIONAL SUBJECT

IGCSE PHYSICAL EDUCATION 0413

Aims of the course

The Cambridge IGCSE Physical Education syllabus enables candidates to:

- develop their knowledge and understanding of the theory underpinning physical performance in a modern world
- use and apply this knowledge and understanding to improve their performance
- perform in a range of physical activities, developing skills and techniques, and selecting and using tactics, strategies and/or compositional ideas
- understand and appreciate safe practice in physical activity and sport
- understand and appreciate the benefit of physical activity and sport for health, fitness and well-being
- gain a sound basis for further study in the field of Physical Education.

Details of the course

The syllabus provides candidates with an opportunity to study both the practical and theoretical aspects of Physical Education. It is also designed to foster enjoyment in physical activity. The knowledge gained should enable candidates to develop an understanding of effective and safe physical performance.

Candidates will study all of the following topics:

- 1: Anatomy and physiology
- 2: Health, fitness and training
- 3: Skill acquisition and psychology
- 4: Social, cultural and ethical influences

Candidates will also undertake four different physical activities chosen from at least two of the seven categories.

Physical activities make a significant contribution to syllabus aims and objectives, serving as a source of material to facilitate learning.

How will the course be examined?

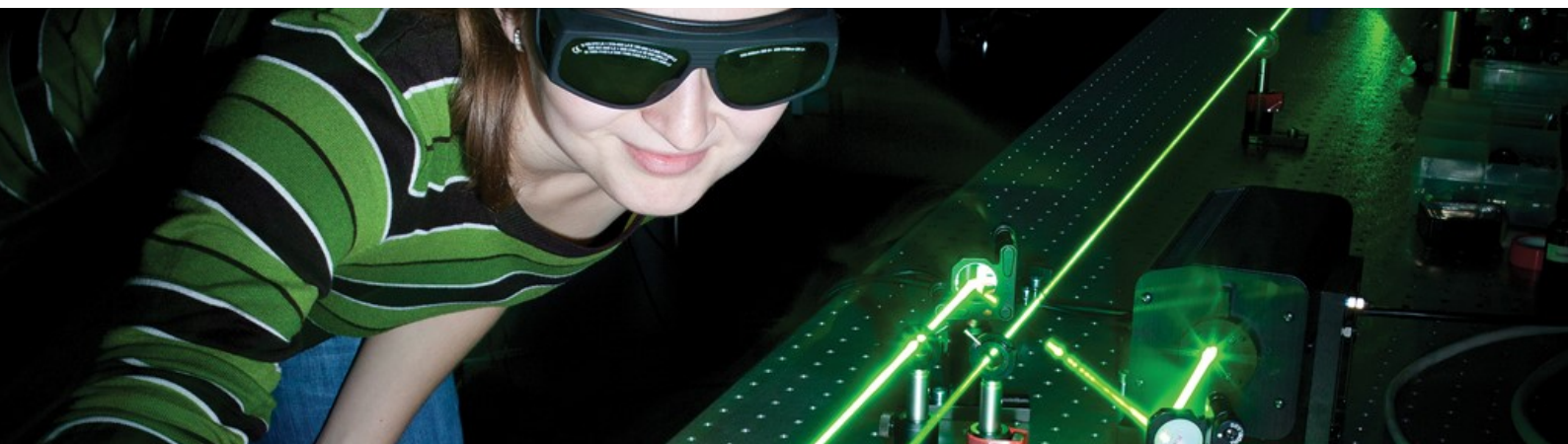
There are two components for the examination. Candidates are eligible for A* - G.

PAPER 1	PAPER 2
WRITTEN EXAMINATION	COURSEWORK
<ul style="list-style-type: none">• 1 hours 45 mins• 50% of overall mark• 100 marks• Candidates answer all questions• Externally assessed.	<ul style="list-style-type: none">• 50% of overall mark• Candidate undertake four physical activities from at least two of the seven categories listed.• Internally assessed/ externally moderated

Career Pathways

Cambridge International IGCSE Physical Education provides a foundation for the study of:

EDUCATION	SPORTS SCIENCE	MEDICAL SERVICES	OTHERS
PHYSICAL EDUCATION SCIENCE	COACH DIETITIAN FITNESS TRAINER SPORTS SCIENTIST SPORTS THERAPIST	NUTRITIONIST OESTEOPATH PHYSIOTHERAPIST PROSTHETIC	EVENT MANAGEMENT RECREATIONAL MANAGEMENT

OPTIONAL SUBJECT

IGCSE PHYSICS 0625

Aims of the course

Cambridge IGCSE Physics enables learners to:

- increase their understanding of the technological world
- take an informed interest in scientific matters
- recognise the usefulness (and limitations) of scientific method, and how to apply this to other disciplines and in everyday life
- develop relevant attitudes, such as a concern for accuracy and precision, objectivity, integrity, enquiry, initiative and inventiveness
- develop an interest in, and care for, the environment
- better understand the influence and limitations placed on scientific study
- develop an understanding of the scientific skills essential for both further study and everyday life.

Details of the course

The broad areas of study are:

1. Motion, Forces & Energy
2. Thermal Physics
3. Waves
4. Electricity & Magnetism
5. Nuclear Physics
6. Space Physics

How will the course be examined?

All candidates take three components.

Core students do Paper1, Paper 3 and Paper 6. Grades for core range from C—G.

Extended students do Paper 2, Paper 4 and Paper 6. Grades for extended range from A* - G.

PAPER 1

MULTIPLE CHOICE

- 45 minutes
- 30% of overall mark
- 40 marks
- 40 multiple choice questions based on core content
- Externally assessed

PAPER 3

THEORY

- 1 hour 15 minutes
- 50% of overall mark
- 80 marks
- Short answer and structured questions on the core content
- Externally assessed

PAPER 6

ALTERNATIVE TO PRACTICAL

- 1 hour
- 20% of overall mark
- 40 marks
- Questions will be based on the experimental skills
- Externally assessed

PAPER 2

MULTIPLE CHOICE

- 45 minutes
- 30% of overall mark
- 40 marks
- 40 multiple choice questions based on extended content
- Externally assessed

PAPER 4

THEORY

- 1 hour 15 minutes
- 50% of overall mark
- 80 marks
- Short answer and structured questions on the extended content
- Externally assessed

Career Pathways

Cambridge International IGCSE Physics provides a foundation for the study of:

ENGINEERING	MEDICINAL CARE	SCIENCE	TECHNOLOGY
AERONAUTICAL ENGINEERING ARCHITECTURE CHEMICAL & ELECTRONIC ENGINEERING MANUFACTURING RESEARCH AND DEVELOPMENT	ARTIFICIAL APPLIANCES MEDICINE PHARMACEUTICALS SPORTS MEDICINE VETINARY SURGEON	ASTROPHYSICS FORENSICS GEOLOGY METEOROLOGY RESEARCH SPORTS SCIENCE	AI DEVELOPMENT COMMUNICATIONS COMPUTER HARDWARE METEOROLOGY RESEARCH & DEVELOPMENT ROBOTICS

NURTURING GLOBAL CITIZENS

**AT KINABALU INTERNATIONAL SCHOOL
WE ARE DEDICATED TO PROVIDING AN
EXCELLENT EDUCATION IN A CARING
RESPECTFUL ENVIRONMENT
CHALLENGING STUDENTS
TO ACHIEVE THEIR
FULL POTENTIAL AS
SUCCESSFUL
GLOBAL
CITIZENS**