



KINABALU
INTERNATIONAL
SCHOOL

NURTURING GLOBAL CITIZENS

A LEVEL BROCHURE

2023-2025



Section 1: Getting started

Welcome to our Sixth Form	Page 3
Mission Statement, Guiding Statements	Page 4
The A Level Programme	Page 5
Graduate Destinations	Page 6-9
Why Choose KIS?	Page 10
Academic Excellence Scholarships	Page 11
Application Process	Page 12-13
School Fees	Page 14-15

Section 2: Subject Options

BIOLOGY	Page 18
CHEMISTRY	Page 20
PHYSICS	Page 22
ART & DESIGN	Page 24
BUSINESS	Page 26
DRAMA	Page 28
ENGLISH	Page 30
ENGLISH LITERATURE	Page 32
GEOGRAPHY	Page 34
HISTORY	Page 36
COMPUTER SCIENCE	Page 38
MATHEMATICS	Page 40
MUSIC	Page 42
PHYSICAL EDUCATION	Page 40
PSYCHOLOGY	Page 42

Welcome to our Sixth Form

Entry into the Sixth Form is a significant moment in any student's educational journey. It marks the point when there is a substantial shift towards greater independence, a personalised curriculum and specialisation. It provides the foundation for future success and, as a school, we take great pride in guiding and supporting students as they progress through this pivotal moment in their education.

At KIS, all our A Level Subjects are offered by Cambridge Assessment International Education (CAIE), a highly regarded examination board that has been offering international examinations for over 150 years. At any one time, around 1 million learners in 10,000 schools, across 160 countries are learning with a Cambridge Curriculum. CAIE A Levels are recognised globally and accepted by all major universities including the Ivy League Universities.



MRS MARGARET RENSHAW
DEPUTY PRINCIPAL /
HEAD OF SECONDARY

International A Levels are a highly flexible programme where students can either study at Advanced Subsidiary Level (AS) or continue with A2 Level in order to complete the full A Level qualification. The AS course is typically completed in Year 12 and the A2 components in Year 13. Students have the choice of studying up to four subjects at A Level and in doing so will gain a deep understanding of the selected subject as well as developing high levels of independent thinking skills. With the broad range of subjects on offer, students have the option to specialise in a specific subject area or continue with a variety of subjects across the full breadth of the programme.

Since the A Level programme started at KIS in 2013 our graduates have achieved high levels of academic success which, in turn, has opened the door to some of the world's very best universities. Students at KIS benefit from small class sizes, specialist teaching and highly personalised support through our pastoral systems. In addition to securing excellent examination results, our students have also been awarded 'Top in the World' and 'Top in Malaysia' at the annual Cambridge Learner Awards. Student achievements especially from the 2021-2022 cohort was one of the best yet and a testament to this.

The world our students will enter is a highly competitive one, where academic excellence alone no longer guarantees success. At the heart of our Sixth Form lies an unwavering belief that all of our graduates should leave with the moral standing, skills and attributes to make a positive contribution to society. To support this notion, all Sixth Form students are encouraged to embrace our extracurricular programme in order to harness their potential both in and outside the classroom.

VISION, MISSION & VALUES



Our Vision: Nurturing Global Citizens

Our Mission:

At Kinabalu International School we are dedicated to providing an excellent education in a caring, respectful environment, challenging students to achieve their full potential as successful global citizens

Our Values:

We celebrate individual and cultural diversity

We are honest, responsible and accountable for our actions

We treat others with dignity and respect

We are supportive of each other and recognise the importance of each other's well-being

We work with others to make the world a better place

The A Level Programme

A Levels are typically two year courses, with AS examinations at the end of Year 12 and A2 examinations at the end of Year 13. Students have the option to drop a subject after the AS examinations and this qualification, in its own right, is effectively worth half of a full A Level. When students complete a full A Level, 50% of the awarded marks are from the AS examinations and 50% from the A2 examinations.

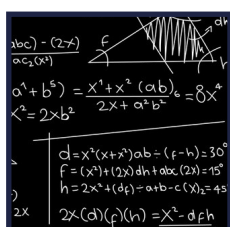


**Cambridge Assessment
International Education**

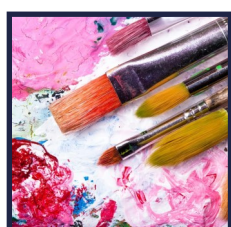
Typically, students pick either three or four AS subjects in Year 12. For those doing four subjects around 30% will drop a subject as they move into Year 13. While universities only make offers based on three A Levels there are distinct benefits of studying four subjects including, but not restricted to:

- Provides further breadth to their academic study
- The fourth subject can serve as an 'insurance'
- Helps demonstrate excellent time management and organisation skills

The subjects available at A Level are:



MATHEMATICS



ART



BIOLOGY



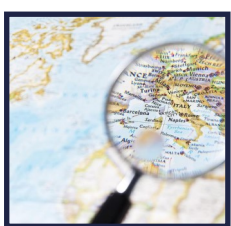
BUSINESS



CHEMISTRY



DRAMA



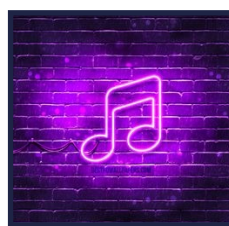
GEOGRAPHY



HISTORY



COMPUTER SCIENCE



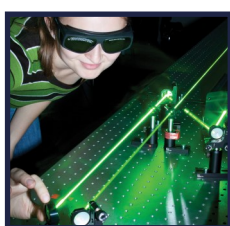
MUSIC



ENGLISH LANGUAGE



PHYSICAL EDUCATION



PHYSICS



ENGLISH LITERATURE



PSYCHOLOGY

Graduate Destinations

Since 2013 KIS graduates have succeeded in gaining entry to some of the world's highest-ranking universities. Our students are truly global in their outlook and each year applications are made to all of the major university destinations including the UK, Australia, USA, Hong Kong, the Netherlands and Malaysia.



Courses studied include:

Engineering	Law	Medicine
Finance & Investment Banking	Business	Hotel Management
Genetics	Biomedical Engineering	Psychology
Primary Education	Language and Literature	Public Relations
Geography	Chemistry	Physics
Sports Science	Software Engineering	Computer Science



Academic Success 2021-22

A-LEVEL

100% PASS



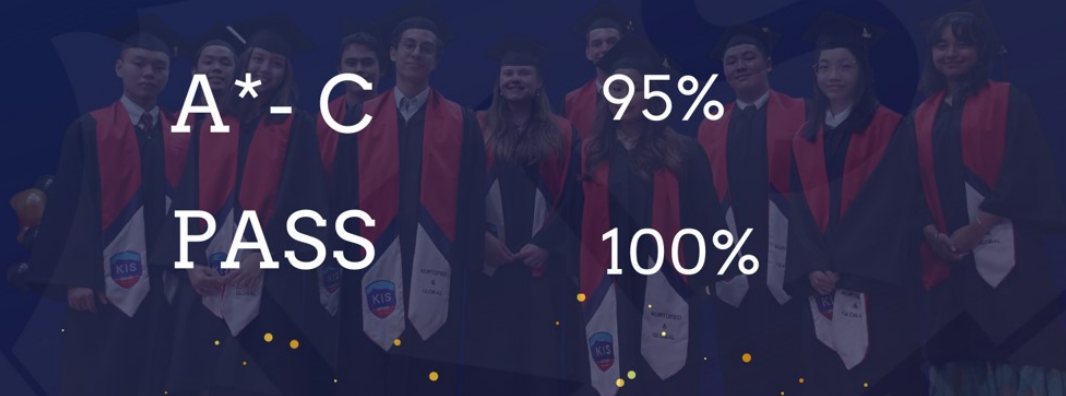
A-LEVEL

A* / A 70%

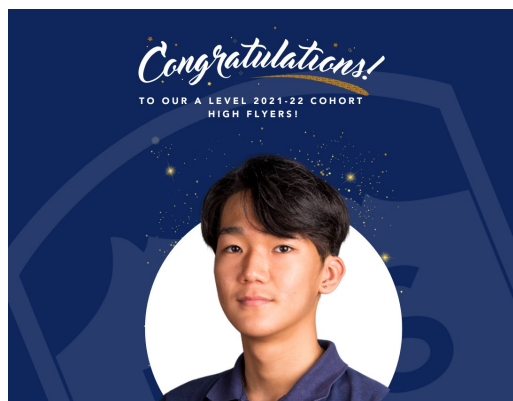
A* - B 86%

A* - C 95%

PASS 100%



2021-22 High Flyers



4 A *
Sang Hun Woo



4 A
Joseph Chang



1 A* & 3 A
Celeste Chung



1 A* & 3 A
Zachary Robinson



3 A
Roshween Riar



1 A* & 3 A
Vadim Audy

Why Choose KIS?

KIS aims to prepare Sixth Form students for life beyond school through providing opportunities for personal growth and development. All Sixth Formers will be expected to make clear and direct contributions to the school community and serve as positive role models to the younger students at all times. When applying to university, students need to demonstrate that they have

Qualified teachers

All of our teachers at Kinabalu International School are qualified teachers with at least three years teaching experience. Many of our A Level teachers have over 10 years teaching experience and all provide expert support for their A level students.

Small class sizes

We are committed to small class sizes to ensure that all students get the individual attention they need to fulfill their academic potential.

Individual support

Each of our A Level students will be supported not only by their subject teachers but also by their Form Tutor and Head of Key Stage 5. One lesson a week is dedicated to PSHE and career/university guidance, so students are equipped with the knowledge and skills to make informed choices. In 2020 we introduced a new online university guidance platform called *Unifrog* to further develop our careers provision and students now have access to an extensive database of university destinations. A significant amount of time is also set aside towards the end of the academic year to advise students on their personal statements and to help them to make the best possible application.

Leadership opportunities

We have many leadership opportunities available to our students including the highly coveted Prefect positions. The student leadership programme is structured in such a way that it helps develop, and improve, both the school and the individual. These leadership roles are highly respected and sought after by universities across the world.

Academic Excellence Scholarships

WHO CAN APPLY?

- Students of all nationalities
- Prospective and existing students of KIS
- Students who have an outstanding academic record and a strong command of written and spoken English
- Students who are passionate about learning
- Scholarships are not available to students whose fees are normally paid for by a sponsoring company

TERMS

- Scholarships will provide for a reduction of between 25 to 75% in the termly school tuition fee
- The School Application Fee of RM800 applies to all prospective students submitting a Scholarship application
- Scholarship students are expected to pay the Refundable Deposit and termly Development Fund Levy in full
- Scholarship students will be entitled to a discount on the Registration Fee (RM 2,500) and Capital Fee (RM 8,000) at the same percentage as the scholarship offered
- Any incidental education expenses throughout the school year, such as Accident Insurance, educational visits, textbooks and exam fees extra-curricular activities etc. will need to be paid for by the student
- Sixth Form Academic Excellence Scholarships are awarded for the duration of the A Level programme (2 years)
- All scholarships will be reviewed on a termly basis to ensure that attainment, commitment and behaviour are being maintained at the standard expected of an academic scholar. Scholarship awards may be withdrawn at any time if the student does not maintain the expected standards. At least one formal warning in writing will be given to the student and parents prior to the withdrawal of a scholarship. The scholarship will be immediately withdrawn in the event of late payment of any school fees
- The scholarship is not transferable and may only be taken up in the year offered.

HOW TO APPLY

See <http://www.kis.edu.my/scholarships> for full details of the application process.

Application Process

EXISTING KIS STUDENTS:

It is expected that, subject to successful achievement of the required IGCSE grades, all Year 11 students will progress into the Sixth Form at KIS. During Term 1 of Year 11 all existing students will be asked to complete a 'Statement of Intentions' form confirming their A Level subject preference or advising the Admissions Team if they do not intend to continue with their studies beyond Year 11 at the school. Year 11 students complete a short PSHE unit in Term 1 exploring career pathways and degree options to assist in the decision making process. Final subject selections will be requested in February.

Students will receive formal confirmation of their place in Year 12 following the receipt of the IGCSE grades in August. If a student is unsuccessful in gaining the required grades further discussion will be required with the Head of Sixth Form.

KIS will endeavour to accommodate subject choices. Should a course be oversubscribed or not be available for any reason, we will communicate this to applicants at the earliest possible stage in the admission procedure.

STUDENTS NEW TO KIS:

A Level courses are rigorous and demanding and students must be fully committed if they are to be successful. For that reason, the school will not accept any applicant who will not be able to meet the demands of the course. We will consider each application carefully and individually.

Step 1: Complete the application form and return it to KIS together with:

Certified copies of school reports for the previous 2 years [in English, translated if necessary] and IGCSE/GCSE/SPM/GCE O Level results, if available, and the Application Fee (RM 800)

Step 2: We will contact your current school and request a confidential reference. This will be sent directly to us.

Step 3: We will invite you to an interview with the Head of Secondary. All applicants must be able to communicate and learn in the medium of English and must be able to prove that his/her language proficiency is of an appropriate level. If there is any doubt, the applicant may be required to take an additional language test at this stage. We may also set test papers in the applicant's chosen subjects to ensure that he/she is capable of study at A Level.

Step 4: If you have not yet completed your qualifying exams you may receive a conditional offer upon successful completion of steps 1-3. The conditions of this offer will specify the grades that you will be expected to achieve. If you have already completed your qualifying examination and have met our admissions criteria, we will issue a Letter of Offer.

Step 5: When you receive your examination results, you must immediately contact the Head of Secondary at KIS. If the results are satisfactory, the conditional offer will be formalised into a firm offer, for acceptance.

School Fees

TUITION FEES 2022-23*

Year	Annual Fee (Tuition Fee + School Development Fund Levy x 3)	Tuition Fee (Billed termly / 3x per year)	School Development Fund Levy (Billed termly / 3x per year)
Year 12	52,167	16,689	700
Year 13	43,822	Term 1 & 2 : 16,689 Term 3 : 8,344.50	700

Confirmed fees for 2023—2025 academic year are currently under Board review at press time. It will be announced by May 2023. Please refer to the Admissions team for fee details.

* Fees include : Materials, resources and general classroom stationery.

*Students in Years 12 & 13 will be invoiced annually for compulsory digital textbooks, if students decide to change or drop subjects these costs are non-refundable. Some subjects do not have digital texts available yet and hardcopies must be purchased. Year 11 & Year 13 shall pay 50% of the third payment in Term 3 from 2022/2023 onwards.

FOR NEW STUDENTS ONLY: ONE TIME ONLY FEES (2022-21*)	
Application Fee	RM 800 per student
Registration Fee	RM 2,500 per student
Capital Fee	RM 8,000 per student
Refundable Deposit	RM 2,500 per student

OTHER FEES / COSTS:

Text Books: Students are expected to purchase course text books, basic stationery and specialised equipment, such as calculators. Text books ,which may be digital will be supplied by the school for purchase by students at the start of the course.

Laptop Computer: Sixth Form students must provide their own laptop computer. All other essential resources to support the curriculum will be provided by the school.

Annual Insurance Fee: RM 31.80 per student - Fees are due and payable before the date of admission or annually before the first day of term. The Insurance Fees are non-refundable. (Schedule of benefits available on request).

Examination Fees: The Cambridge Examination Board charges approximately 85 Pounds Sterling for each full A Level subject. This is payable when the school confirms the candidate for the

SUBJECT OPTIONS

BIOLOGY

CHEMISTRY

PHYSICS

ART & DESIGN

BUSINESS

DRAMA

ENGLISH

ENGLISH LITERATURE

GEOGRAPHY

HISTORY

COMPUTER SCIENCE

MATHEMATICS

MUSIC

PHYSICAL EDUCATION

PSYCHOLOGY







Biology (9700)

Universities value learners who have a thorough understanding of key concepts in Biology, an in-depth knowledge of Biology's most important themes and strong practical skills. Cambridge International AS and A Level Biology helps learners develop the knowledge and skills that will prepare them for successful university study. Our learners also develop lifelong skills of scientific enquiry, confidence in technology, and communication and teamwork skills.

Cambridge International AS & A Level Biology encourages the learning of the following key concepts:

Cells as the unit of life

Natural selection

Biochemical processes

DNA, the molecule of heredity

Organisms in their environment

Observation and experiment

Content overview : Year 12 Content

Cell Structure

Nucleic acids and protein synthesis

Biological molecules

Transport in plants

Transport in mammals

Gas exchange

Cell membranes and transport

Infectious Disease

Immunity

The mitotic cell cycle

Enzymes

In Year 13, Biology students study the following topics:

Photosynthesis

Energy and respiration

Homeostasis

Selection and evolution

Inheritance

Control and co-ordination

Genetic technology

Biodiversity, classification
and conservation

Career pathways

MEDICAL CARE

DOCTOR

PHYSIOTHERAPIST

VETERINARY
SURGEON

SCIENCE

BIOCHEMIST

BIOLOGIST

FORENSIC SCI-
ENCE
PHARMACY

ENVIRONMENT

ANIMAL
HUSBANDRY

AGRICULTURE

MARINE BIOLOGIST
CONSERVATION

SPORT AND FITNESS

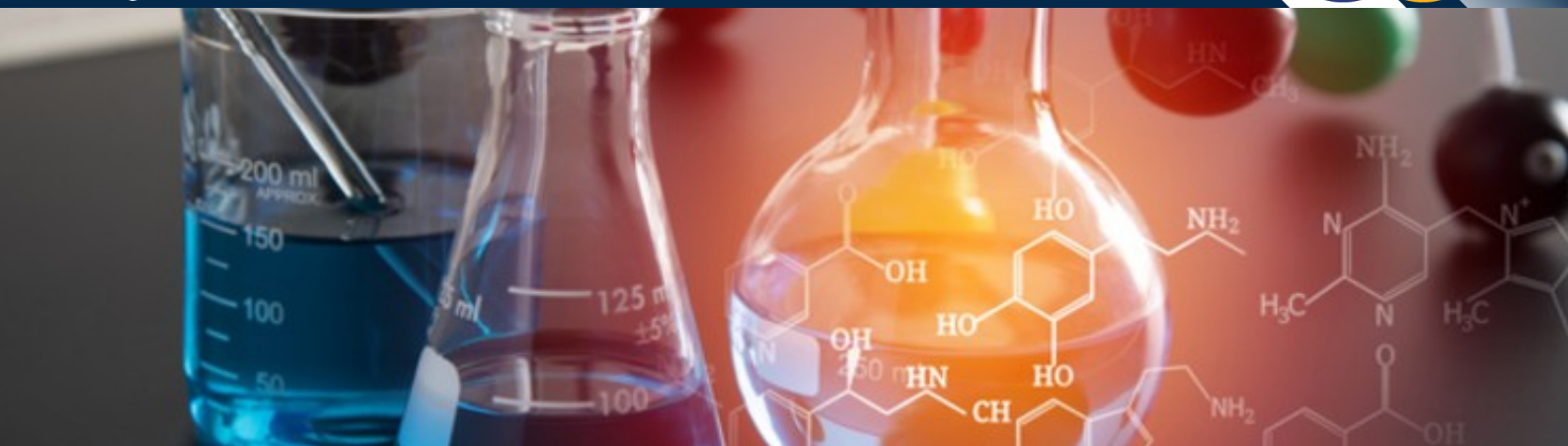
FITNESS COACH

NUTRITIONIST

SPORT SCIENCE

Prior learning:

We recommend that learners who are beginning this course should have previously completed a Cambridge O Level or Cambridge IGCSE course, or the equivalent, in Biology or Double Science and obtained at least a B grade.



Chemistry (9701)

Universities value learners who have a thorough understanding of key concepts in Chemistry, an in-depth knowledge of chemistry's most important themes and strong practical skills. Cambridge International AS and A Level Chemistry helps learners develop the knowledge and skills that will prepare them for successful university study. Our learners also develop lifelong skills of scientific enquiry, confidence in technology, and

Cambridge International AS & A Level Chemistry encourages the learning of the following key concepts:

Atoms and forces

Chemical behaviour
and reactions

Energy changes

Experiments and
evidence

Chemical bonds

Content overview

The AS & A Level Chemistry syllabus content is based around the four main topics of Physical Chemistry, Inorganic Chemistry, Organic Chemistry and Analysis. Students will also develop practical skills through a comprehensive programme of laboratory work

Physical Chemistry	Inorganic Chemistry	Organic Chemistry & Analysis
Atoms, molecules and stoichiometry	The Periodic Table: chemical periodicity	An introduction to organic chemistry
Atomic structure	Group 2	Hydrocarbons
Chemical bonding	Group 17	Halogen derivatives
States of matter	The chemistry of transition elements	Hydroxy compounds
Chemical energetics	Nitrogen and sulfur	Carbonyl compounds
Electrochemistry		Carboxylic acids and derivatives
Equilibria		Nitrogen compounds
Reaction kinetics		Polymerisation
		Analytical techniques

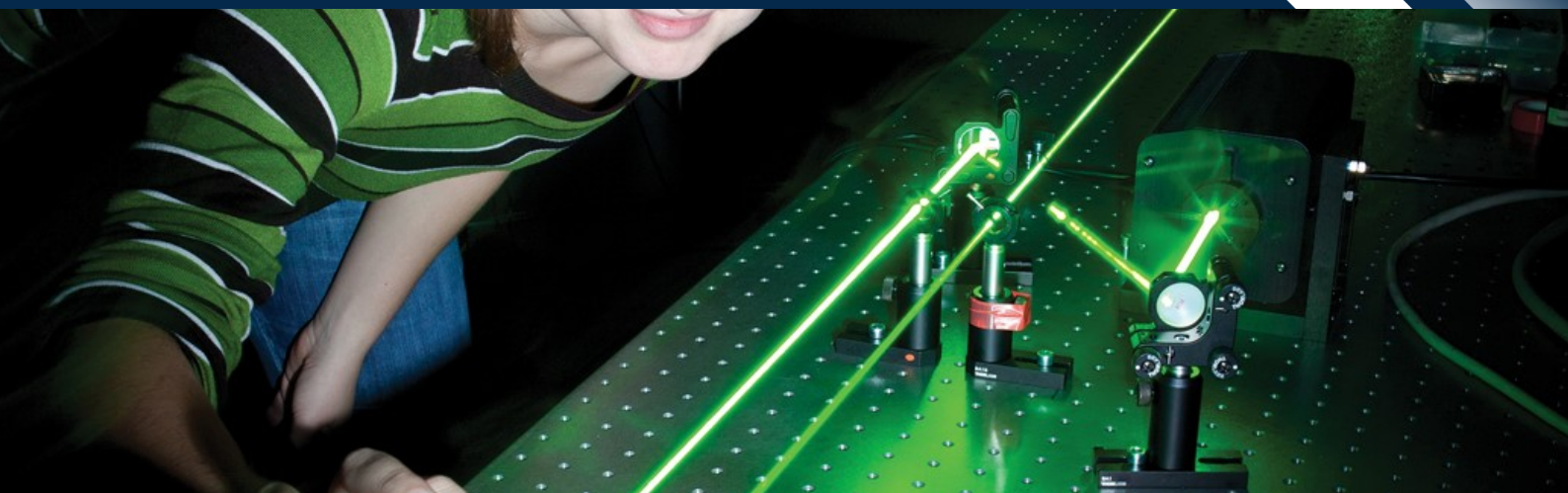
Career pathways:

Cambridge International A Level Chemistry is a much sought after qualification by universities. Chemistry students can enjoy a wide range of potential career paths, all leading to some of the highest paid employment opportunities.

ENVIRONMENT	ENGINEERING	HEALTH CARE	SCIENCE
AGRICULTURE	CHEMICAL ENGINEERING	MEDICINE	CHEMIST
FOOD CHEMIST	MANUFACTURING	PHARMACEUTICALS	FORENSICS
CONSERVATION	PETROCHEMICALS	SPORTS MEDICINE	PHARMACOLOGY
GEOLOGY	RENEWABLE ENERGY	VETERINARY SURGEON	RESEARCH

Prior learning:

We recommend that learners who are beginning this course should have previously completed a Cambridge O Level or Cambridge IGCSE course, or the equivalent, in Chemistry or Double Science and obtained at least a B grade.



Physics (9702)

Universities value learners who have a thorough understanding of key concepts in physics, an in-depth knowledge of the most important themes in physics and strong practical skills. Cambridge International AS and A Level Physics helps learners develop the knowledge and skills that will prepare them for successful university study. Our learners also develop lifelong skills of scientific enquiry, confidence in technology, and communication and teamwork skills.

Cambridge International AS & A Level Physics students will explore the following key concepts:

Models of physical systems

Forces and fields

Mathematics as a language

Matter, energy and waves

Testing predictions against

Content overview:

In Year 12, Physics students study the following topics:

A LEVEL

Work, energy and power	D.C Circuits
Kinematics	Electricity
Dynamics	Particle Physics
Waves	Forces, density and pressure
Deformation of solids	Superposition
Physical Quantities and Units	

In Year 13, Physics students study the following topics:

A LEVEL	
Motion in a circle	Quantum physics
Thermodynamics	Ideal gases
Nuclear physics	Capacitance
Astronomy & cosmology	Alternating currents
Gravitational fields	Magnetic fields
Oscillations	Temperature
Medical physics	Electric fields

Career pathways:

A Level Physics is a vital choice for many careers especially those involving Engineering, Medicine, Science or Technology.

ENGINEERING	HEALTH CARE	SCIENCE	TECHNOLOGY
AERONAUTICAL	ARTIFICIAL APPLIANCES	ASTROPHYSICS	AI DEVELOPMENT
ENGINEERING	MEDICINE	FORENSICS	COMMUNICATIONS
ARCHITECTURE	PHARMACEUTICALS	GEOLOGY	COMPUTER HARDWARE
CHEMICAL ENGINEERING	SPORTS MEDICINE	METEOROLOGY	RESEARCH AND DEVELOPMENT
MANUFACTURING	VETINARY SURGEON	RESEARCH	ROBOTICS
RESEARCH AND DEVELOPMENT		SPORTS SCIENCE	

Prior learning:

Students who study A Level Physics are required to have at least a grade B pass at IGCSE Physics or equivalent.



Art & Design (9479)

Cambridge International AS & A Level Art & Design provides opportunities for learners to develop their personal practice, enrich their understanding of key concepts and improve their practical skills in a wide range of traditional and contemporary techniques.

It allows learners to explore and build on their interests.

The syllabus encourages independent expression and the development of a critical, reflective practice. It is designed to accommodate a wide range of abilities, materials and resources, and allows the different skills of teachers to be fully exploited.

During the A Level programme students will develop their ability to be:

Confident : Experimenting with media and materials in two- and three-dimensional processes, taking risks and improving technical skills to develop a personal artistic style

Responsible: Taking charge of their own development as practitioners, with an independent approach to the creative process

Reflective : Recording ideas and critically evaluating their work as they continually review, refine and adapt

Innovative: Combining approaches and techniques

and developing the skills to solve problems creatively

Engaged: enriching their work by exploring different artists, movements and concepts.

Cambridge International AS & A Level Art & Design encourages the learning of the following key concepts:

Communication

Critical reflection

Materials and processes

Intention

Research and context

Creativity

Fine Art

**Graphic
Communication**

**Three
Dimensional**

**Fabric and
Textiles**

Career pathways:

Every year thousands of students with Cambridge International AS & A Levels gain places at leading universities worldwide. Cambridge International A Level Art and Design provides a suitable foundation for the study of:

ART	MEDIA COMMUNICATIONS	COMPUTER GRAPHICS	ARCHITECTURE/ OTHERS
ARTIST	ADVERTISING	LEAD ANIMATOR	ARCHITECTURE DESIGN
MUSEUM & GALLERY CURATOR	GRAPHIC AND MEDIA DESIGN	VIDEO GAME DESIGN	INTERIOR DESIGN
ILLUSTRATOR	GRAPHIC BRANDING AND IDENTITY	VISUAL EFFECT ANIMATION	ENVIRONMENTAL AND LANDSCAPE DESIGN
ART HISTORIAN	WEB DESIGN	DIGITAL ILLUSTRATION	URBAN DESIGN
ART VALUER	ILLUSTRATION AND VISUAL MEDIA	CONCEPT ART	FASHION
THEATRE DESIGNER	PHOTOGRAPHY	MOTION GRAPHIC DESIGN	PRODUCT DESIGNER
ART EDUCATOR	FILM PRACTICE		
ART AUCTION CREATIVE			

Prior learning:

No prior learning is needed to study AS or A Level Art and Design. However, students who have not studied the IGCSE Art and Design course, or equivalent, a portfolio of artwork may be needed. An ability to draw is a required skill.



Business (9609)

The study of the recently-revised and updated Cambridge International AS and A Level Business qualification allows students to take the first step towards a career in private sector or public sector organizations or progress with confidence towards studying a university degree in business and management-related subjects. This exciting qualification helps to develop many valuable cross-transferable skills and provides students with a general knowledge about business that will prove useful in a wide range of careers.

The following key concepts underpin Cambridge International AS and A-Level Business and will also enrich the student learning experience throughout the duration of the course.

Change

Context

Decision– making

Enterprise

Innovation

Strategy

Career pathways:

The Cambridge International A-Level provides students with an appropriate foundation for the study of Business or Business-related courses in Higher Education. Equally, it is appropriate for students intending to pursue careers or further study in business or management or as part of a course of general education.

BUSINESS/ LAW / MARKETING	FINANCIAL SERVICES	LEISURE / HUMAN RESOURCE	TECHNOLOGY
BUSINESS OWNER	ACCOUNTANCY	HOTEL MANAGEMENT	DATA ANALYST
ECONOMIST	ACTUARY	SPORT MANAGEMENT	OPERATIONS
FINANCE	BANKING	TOURISM	PROJECT MANAGEMENT
MARKETING	INSURANCE		

Prior learning:

No prior learning is needed or expected to study AS or A Level Business.



Drama (9482)

Cambridge International AS & A Level Drama provides opportunities for learners to develop their skills as theatrical practitioners, engaging with performance texts in practical and creative ways. It fosters engagement with, and enjoyment of, the study of a wide range of theatrical styles and genres. Through their study, learners will develop as skilled, well-informed, reflective practitioners, able to research ideas and create and interpret meaning through drama.

The aims of the course:

Cambridge International AS & A Level Drama encourages students to explore a range of practical and theoretical approaches to drama from script to performance. The syllabus encourages students to develop the ability to apply practical skills effectively and to analyse and evaluate both their own work and the work of others.

At AS Level, students focus on three key areas:

- the exploration, interpretation and analysis of the potential of dramatic texts in a performance context
- the development of dramatic skills and their application to the process of devising based on a selected stimulus
- the development of acting skills and their application to scripted performance.

At A Level, students focus on three key areas:

- theatre-making and performance through the process of devising and presenting a piece inspired by a selected practitioner or tradition or style

Career pathways

A Level Drama students develop excellent communication and interpersonal skills which are much sought for by employers. Careers opportunities for students are wide and varied.

BUSINESS	MEDIA		OTHER
ADVERTISING	AUDIOVISUAL ENGINEER	ACTOR	ANIMATION
MARKETING	DIRECTOR	SOUND MANAGER	EVENT MANAGEMENT
PROMOTIONAL MANAGER	EDITOR	STAGE MANAGER	HOSPITALITY
	PHOTOGRAPHY	THEATRE MANAGER	RECREATIONAL MANAGEMENT
SALES	PRODUCER		TOURISM

Prior learning:

There is no prior learning required to take this course.



English Language (9093)

Our age demands an acute critical sensitivity to language. An A Level in this subject is not only a valuable qualification per se, it also equips students with the ability to analyse language usage forensically.

English Language learners develop an understanding and enjoyment of a wide variety of different texts, both written and spoken. They gain awareness of how language works in different ways, for different purposes and for different audiences.

In addition, they gain skills for life, including:

- the ability to appreciate how different texts are shaped by their language and style
- skills in creating their own imaginative and persuasive writing
- skills in researching, selecting and shaping information
- the ability to analyse and compare written and spoken texts in close detail.

Cambridge International AS & A Level English Language encourages the learning of the

Analysing written and spoken texts

Structure

Language acquisition

Context

Imaginative writing

Persuasive and argumentative writing

Spontaneous speech

Spoken language and social groups

Content overview:

The AS & A Level English Language syllabus is broad based. Texts will be drawn from a range of English language sources such as advertisements, brochures, leaflets, editorials, news stories, articles, reviews, blogs, investigative journalism, letters, podcasts, (auto) biographies, diaries, essays, scripted speech (e.g. a speech by a politician) and narrative/descriptive writing.

Candidates are required to:

- identify distinguishing features of the texts, relate them to the function and context of the writing, and organise information in their answers
- comment on aspects such as vocabulary, figurative language (e.g. use of metaphor and simile), word ordering and sentence structure, formality/informality of tone, and the communication of attitudes, bias or prejudice, structure
- write for a specific purpose and/or audience using appropriate vocabulary, tone, and style.

Career pathways:

BUSINESS	MEDIA	PUBLISHING	OTHER
ADVERTISING	BROADCASTING	EDITOR	LAW
MARKETING	JOURNALISM	PROOFREADER	PSYCHOLOGY
SALES	SCRIPTWRITER	WRITER	SOCIOLOGY
TOURISM			

Prior learning:

We recommend that learners who are beginning this course should have an IGCSE or equivalent qualification in English at grade C or above.



English Literature (9695)

Cambridge International AS & A Level Literature in English is accepted by universities and employers as proof of knowledge and understanding.

Successful Literature in English learners develop a lifelong understanding and enjoyment of literary texts, and, importantly, gain a range of essential skills, including:

- the ability to write clearly and effectively
- skills in developing arguments
- skills in researching and managing information
- the ability to analyse complex texts in different forms and styles.

Cambridge International AS & A Level English Literature encourages the learning of the following key concepts:

Imaginative literature

Audience and Readership

Language and style

Structure

Genre

Conventions

Context

Interpretation

Form

Content overview:

During the course students will study and analyse a range of literary texts. They will analyse the different elements of novels and prose including characterization, action and setting.

Candidates must demonstrate:

- The ability to respond to texts in the three main forms (Prose, Poetry and Drama) of different types and from different cultures
- An understanding of the ways in which writers' choices of form, structure and language shape and meaning
- The ability to produce informed, independent opinions and judgments on literary texts.

Career pathways:

Students who take A Level Literature find that it is an excellent preparation for careers in the Media [publishing, journalism, advertising etc], business, administration and teaching. A Level Literature teaches indispensable skills that are recognised by employers who put a high value on people who can construct a clearly expressed argument, present ideas concisely, logically and clearly and who can make a critical analysis of a piece of writing.

BUSINESS	MEDIA	PUBLISHING	OTHER
ADVERTISING	BROADCAST- ING	EDITOR	LAW
MARKETING	JOURNALISM	PROOFREADER	PSYCHOLOGY
SALES	SCRIPTWRITER	WRITER	SOCIOLOGY
TOURISM			

Prior learning:

We recommend that learners who are beginning this course should have a good understanding of English and preferably have studied English at IGCSE level or equivalent.



Geography (9696)

Geography occupies a central position in understanding and interpreting issues affecting people, places and environments, and change in both space and time. Cambridge International AS and A Level Geography helps learners develop the knowledge and skills that will prepare them for successful university study.

Cambridge International AS & A Level Geography encourages the learning of the following key concepts:

Space

Scale

Place

Diversity

Interdependence

Environment

Change

Content overview:

Core Physical Geography	Core Human Geography
Hydrology and fluvial geomorphology	Population
Atmosphere and weather	Migration
Rocks and weathering	Settlement dynamics

Candidates for Cambridge International A Level Geography study the AS Level topics and two options from each of:

Advanced Physical Geography	Advanced Human Geography
Tropical environments	Production, location and change
Coastal environments	Environmental management
Hazardous environments	Global interdependence
Hot arid and semi-arid environments	Economic transition

Career pathways:

Cambridge International A Level Geography provides a suitable foundation for the study of Geography or related courses in higher education. Equally it is suitable for candidates intending to pursue careers or further study in Planning, Environmental Subjects, Development, and Tourism. Many of the skills learned while studying Geography are readily transferable.

ENVIRONMENTAL	BUSINESS	GEOGRAPHICAL	SCIENCE
AGRICULTURAL CONSULTANT	LOCATION MANAGER	LAND DEVELOPER	BOTANIST
CONSERVATION	LOGISTICS	MINING	ECOLOGY
ECOLOGY	MARKET RESEARCH	SURVEYOR	GEOLOGY
ENVIRONMENTAL MANAGEMENT			MARINE BIOLOGY
			METEOROLOGY

Prior learning:

No prior learning is needed to study A Level Geography.



History (9389)

Cambridge International AS & A Level History is accepted by universities and employers as proof of knowledge and understanding of History. Successful candidates learn to evaluate historical evidence, present clear and logical arguments, assess different interpretations of an argument and develop an understanding of historical concepts such as cause and effect, similarity and difference and continuity and change.

Cambridge International AS & A Level History encourages the learning of the following key skills:

Knowledge and understanding
of History

Assessing different
interpretations of an argument

Evaluating historical evidence

Presenting clear and
logical arguments

Formulating their own
independent ideas about a sub-
ject

Developing an understanding of
historical concepts such as cause
and effect, similarity and differ-
ence and continuity and change.

Units covered in the course:

- The Search for International Peace and Security, 1919–1945
- International Relations, 1871–1945
- The Holocaust OR The Origins and Development of the Cold War, 1941–1950
- And ONE of the following Depth Studies:
Europe of the Dictators, 1918–1941
The History of the USA, 1945–1990
International History, 1945–1991

Content overview

A Level History students will study a programme based around significant events in Modern World History. The programme is designed to enable students to develop:

- an interest in the past and an appreciation of human endeavour
- a greater knowledge and understanding of historical periods or themes
- a greater awareness of historical concepts such as cause and consequence, change and continuity, similarity and difference, significance and interpretations
- an appreciation of the nature and diversity of historical sources available, and the methods used by historians
- an exploration of a variety of approaches to different aspects of history and different interpretations of particular historical issues
- the ability to think independently and make informed judgements on issues

Career pathways:

Cambridge International AS & A Level History is accepted by universities and employers as proof of knowledge and understanding of History. Successful candidates learn to evaluate historical evidence, present clear and logical arguments, assess different interpretations of an argument and develop an understanding of

LEGAL PROFESSION	MEDIA	PUBLIC SECTOR	OTHER
BARRISTER	EDITOR	CIVIL SERVICE	ACCOUNTANT
PATENT AGENT	JOURNALIST	MUSEUM CURATOR	ANTIQUE DEALER
SOLICITOR	PRODUCER	POLITICAL ADVISOR	ARCHEOLOGY
		PUBLIC RECORDS	

Prior learning:

No prior learning is needed to study A Level History.



Computer Science (9618)

Cambridge International AS & A Level Computer Science encourages learners to meet the needs of Higher Education courses in computer science as well as twenty-first century digital employers. It encourages learners to think creatively, through applying practical programming solutions, demonstrating that they are effective users of technology.

Key concepts are essential ideas that help students develop a deep understanding of their subject and make links between different aspects. Key concepts may open up new ways of thinking about, understanding or interpreting the important things to be learned.

Good teaching and learning will incorporate and reinforce a subject's key concepts to help students gain:

a greater depth as well as breadth of subject knowledge

confidence, especially in applying knowledge and skills in new situations

the vocabulary to discuss their subject conceptually and show how different aspects link together

a level of mastery of their subject to help them enter higher education.

The key concepts identified below, The key concepts for Cambridge International AS & A Level Computer Science are: carefully introduced and developed, will help to underpin the course you will teach. You may identify additional

Computational thinking

Programming paradigms

Communication

Computer architecture
and hardware

Data representation and
structures

AS Level

Information representation
 Communication
 Hardware
 Processor Fundamentals
 System Software
 Security, privacy and data integrity
 Ethics and Ownership
 Databases
 Algorithm Design and Problem-Solving
 Data Types and structures
 Programming

A Level

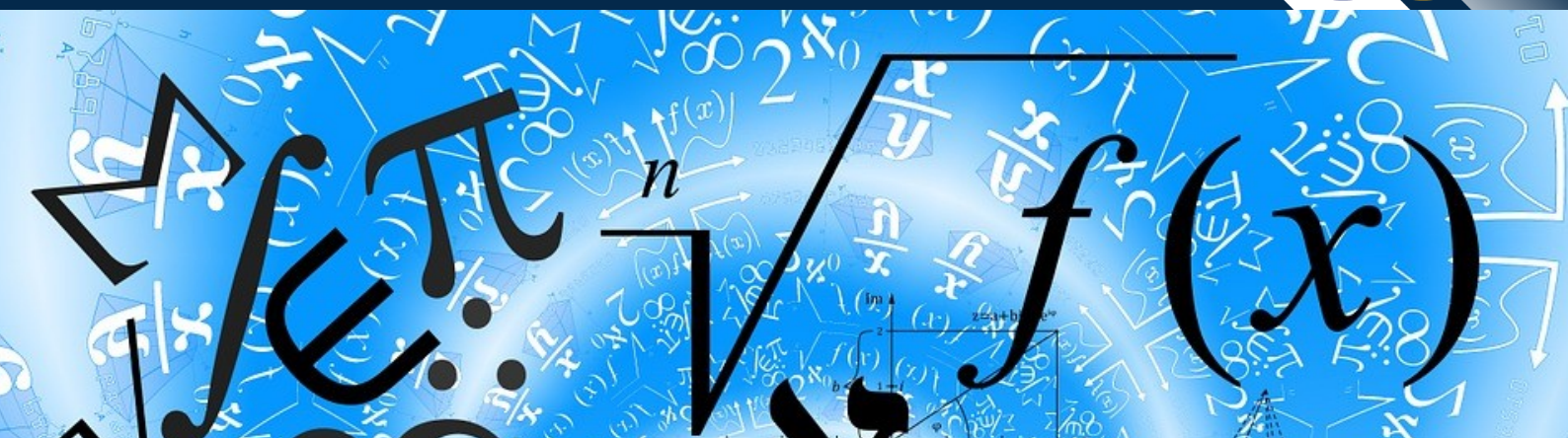
Data Representation
 Communication and internet technologies
 Hardware and Virtual Machines
 System Software
 Security
 Artificial Intelligence (AI)
 Computational thinking and problem solving
 Further Programming

Career pathways: From games developer to manager of IT and communications services, you'll have a range of opportunities open to you as a Computer Science graduate

BUSINESS	ENGINEERING	MEDIA	TECHNOLOGY
COMMUNICATIONS SERVICE	AIR TRAFFIC CONTROLLER	ANIMATION	APP PROGRAMMER
DATABASE SCIENTIST / ADMINISTRATOR	CAD / CAM	AUDIO/ VISUAL ENGINEER	GAME DESIGNER
INFORMATION ANALYST	MANUFACTURING	MULTIMEDIA SPECIALIST	NETWORK MANAGER
LOGISTICS	PRODUCTION ENGINEER	GAMES DEVELOPER	ROBOTICS
SYSTEM ANALYST		WEBSITE DEVELOPER	INFORMATION SECURITY ANALYST
TECHNICAL SUPPORT			SOFTWARE DEVELOPER

Prior learning:

No prior learning is required



Mathematics (9709)

Cambridge International AS & A Level Mathematics develops a set of transferable skills. These include the skill of working with mathematical information, as well as the ability to think logically and independently, consider accuracy, model situations mathematically, analyse results and reflect on findings. Learners can apply these skills across a wide range of subjects and the skills equip them well for progression to higher education or directly into employment.

Cambridge International AS & A Level Mathematics students will explore the

Problem solving

Communication

Mathematical modelling

Content overview:

AS Level		A Level	
Pure 1	Statistics 1	Pure 3	Mechanics 1
Quadratics Functions Coordinate Geometry Circular Measure Trigonometry Series Differentiation Integration	Representation of data Permutations and combinations Probability Discrete random variables The normal distribution	Algebra Logarithmic and exponential functions Trigonometry Differentiation Integration Numerical solution of equations Vectors Differential equations	Forces and equilibrium Kinematics of motion in a straight line Momentum Newton's laws of motion Energy, work and power

Career pathways:

A Level Mathematics is a vital choice for many careers especially those involving Engineering, Science or Technology.

BUSINESS / FINANCE	MEDIA	SCIENCE	TECHNOLOGY
ACTUARY	AERONAUTICAL ENGINEERING	ASTROPHYSICS	AI DEVELOPMENT
ACCOUNTANT	ARCHITECTURE	BIOLOGIST	COMMUNICATION
INVESTMENT BRO-	CHEMICAL ENGINEERING	CHEMIST	PROGRAMMER
ECONOMIST	DESIGN	CHEMIST	ROBOTICS
LOGISTICS	ELECTRICAL AND ELECTRONIC ENGINEERING	MEDICAL SCIENC-	SOFTWARE DEVELOPMENT
RISK ANALYST	MANUFACTURING	PHYSICIST	SYSTEMS DEVELOPMENT
TECHNICAL SUPPORT	RESEARCH & DEVELOPMENT		

Prior learning:

Students who study A Level Mathematics are required to have at least a grade B pass at IGCSE Mathematics or equivalent.



Music (9483)

Cambridge International AS and A Level Music encourages learners to develop their musical skills in a variety of music styles and traditions and build on their musical interests. Learners are encouraged to listen, compose and perform with understanding, analysis and confident communication.

They learn to become independent and critical thinkers.

Content overview:

Cambridge International AS & A Level Music encourages learners to study a variety of music and build on their individual interests. Learners develop the ability to make connections between the musical activities of listening, composing and performing and the variety of music around the world. Teachers have the flexibility to structure the Cambridge AS & A Level Music syllabus so that the course supports and develops learners' musical experience, interests and abilities.

At AS Level, learners focus on listening, composing and performing. For listening, they study set works. These are chosen to support learners in developing their listening skills and understanding of music, including compositional techniques and performance practice. They learn to work with Western notation. Learners also listen to and explore other music of their choice and identify and learn to communicate connections across a wide variety of music. Learners are also encouraged to build on their own personal musical interests as they study composing and performing.

The key concepts for Cambridge International AS & A Level Music are:

Rhythm

Texture and
timbre

Melody and line

Continuity and
change

Harmony

Form

Tension and
resolution

Through this, they learn to develop their own range of compositions and performance programme. At A2 Level, learners have the opportunity to build on their AS Level studies. They study two areas of interest from composing and performing. Learners have the opportunity to develop their musical knowledge, skills and understanding and to communicate these through music.

Career pathways:

Cambridge International A Level Music provides a foundation for the study of music or related courses in higher education. Equally it is suitable as part of a course of general education. Students of A Level music learn many transferable skills, especially in the art of communication.

BUSINESS	MEDIA	MUSIC	OTHERS
ADVERTISING	ACOUSTIC ENGINEER	COMPOSER	EVENT MANAGEMENT
MARKETING	AUDIOVISUAL ENGINEER	CONDUCTOR	HOSPITALITY
PROMOTIONAL MANAGER	DIRECTOR	DISC JOCKEY	RECREATIONAL MANAGEMENT
SALES	EDITOR	MUSICIAN	TOURISM
	PHOTOGRAPHY	SOUND ENGINEER	
	PRODUCER	THEATRE MANAGER	
		JOURNALIST/ MUSIC CRITIC	
		MUSIC PUBLISHER	

Prior learning:

IGCSE Music or at least 4 years of playing an instrument and Level 2 theory



Physical Education (9396)

The Cambridge International AS and A Level Physical Education syllabus is both practical and theoretical. As well as fostering enjoyment in physical activity, it will encourage students to develop an understanding of the interaction between theory and practice by focusing on the performer and performance. Students learn about anatomy and physiology, movement skills and contemporary studies at Cambridge International AS Level. This provides a firm foundation for the further advanced study of exercise, physiology, psychology of sport performance and the study of the Olympic Games from a global perspective.

Content overview:

AS LEVEL

Applied anatomy and physiology

Acquiring, developing and performing movement skills

Exercise and sport physiology

Psychology of sport performance

Olympic games: a global perspective

The aims of this course are:

- to provide a knowledge and understanding of the conceptual basis, structure and function of a selection of physical education activities
- to develop understanding and problem-solving skills (interpretation and evaluation)
- to develop planning and practical skills for effective performance
- to foster an ability to relate practice to theory, and theory to practice

Career pathways:

A Level Physical Education is an excellent pathway career choice for students who are wanting to pursue careers in areas like Physiotherapy or Sports Science. It is also a very useful qualification for other fields like Leisure and Tourism or Recreational development.

EDUCATION	SPORTS SCIENCE	MEDICAL SERVICES	OTHERS
PHYSICAL EDUCATION SCIENCE	COACH DIETITIAN FITNESS TRAINER SPORTS SCIENTIST SPORTS THERAPIST	NUTRITIONIST OESTEOPATH PHYSIOTHERAPIST PROSTHETIC TECHNICIAN	EVENT MANAGEMENT RECREATIONAL MANAGEMENT

Prior learning:

We recommend that learners who are beginning this course should have previously completed an IGCSE course in Physical Education or the equivalent.

Note:

Due to CIE dropping this course and introducing a new one, students will only be able to take AS and not A2 in Year 13



Psychology (9990)

Cambridge International AS & A Level Psychology is accepted by universities and employers as proof of knowledge and ability. This syllabus aims to encourage an interest in and appreciation of psychology through an exploration of the ways in which psychology is conducted. This exploration includes a review of a number of important research studies and an opportunity to look at the ways in which psychology has been applied.

The syllabus uses a wide variety of assessment techniques that will allow learners to show what they know, understand and are able to do. The emphasis is on the development of psychological skills as well as the learning of psychological knowledge.

Cambridge International AS & A Level Psychology encourages the learning of the following key concepts:

Nature versus nurture

Choice of psychological research methods

Ethics in psychological research

Relevance of psychology

No one view in psychology is definitive

Content overview

Cambridge International AS and A Level Psychology provides candidates opportunities to consider approaches, issues and debates and research methods that underpin all aspects of psychology. At AS Level candidates focus on 12 core studies.

The core studies illustrate a wide range of research methods used in psychology, such as experiments, observations, self-reports and case studies. Candidates for Cambridge International A Level Psychology study the AS Level content and two of the following options: :

1. Clinical Psychology: This specialist option considers the definitions, symptoms, causes and treatments of a variety of mental disorders.
2. Consumer Psychology: This specialist option reflects the society in which we live and looks at both seller and purchaser as well as the design of consumer environments.
3. Health Psychology: This specialist option focuses on health issues, including pain and stress.

Career pathways:

BUSINESS	HUMAN RESOURCES	PSYCHOLOGY	OTHER
ADVERTISING	CAREERS ADVISOR	EDUCATIONAL PSYCHOLOGY	AI DEVELOPMENT
MARKETING	PERSONNEL MANAGER	FORENSICS	COMMUNICATIONS
PROMOTIONAL MANAGER	RECRUITMENT	PSYCHOLOGIST	COMPUTER HARDWARE
SALES	SPORTS MEDICINE	THERAPY	RESEARCH AND DEVELOPMENT
COMMUNICATION		RESEARCH	ROBOTICS

Prior learning:

No prior learning is needed to take this course.

NURTURING GLOBAL CITIZENS

**AT KINABALU INTERNATIONAL SCHOOL
WE ARE DEDICATED TO PROVIDING AN
EXCELLENT EDUCATION IN A CARING
RESPECTFUL ENVIRONMENT
CHALLENGING STUDENTS
TO ACHIEVE THEIR
FULL POTENTIAL AS
SUCCESSFUL
GLOBAL
CITIZENS**